

# **Clearview Remote Surveillance System**

*Quick Start Reference Guide*

## Table of Contents

1) Overview.....	4
2) Initial Setup – Adding a Connection.....	5
3) Viewing Live Cameras.....	9
4) Channel Playback.....	11
5) Predetermined Views – “Tasks”.....	14
6) E-Map Setup.....	16
7) Software Configuration.....	24
8) PC-NVR.....	26

## **1) Overview:**

The Clearview Remote Surveillance System is our latest client end application for network monitoring. This version will support connections not only to Edge, Flex, Max, and Elite series recorders but, anything from our IP camera line including our Network Video Servers and Video decoders! This software is a great solution for users who do not wish to use the Internet Explorer web interface, or for users who have multiple sites they would like to centrally view and manage.


## 2) Initial Setup – Adding a New Connection

This chapter will walk you through the initial setup of your ClearviewRemote software. The first step after installation is traditionally to add your connection information into the software.

Step 1: Start off by launching the ClearviewRemote software application. If you haven't changed it yet, use the user name "admin" and password as "admin". See Figure 2-1.



Figure 2-1

Step 2: Once logged in to the software, click the  button labeled 'Device Mgr' on the Home page. You will see the following menu. See Figure 2-2.

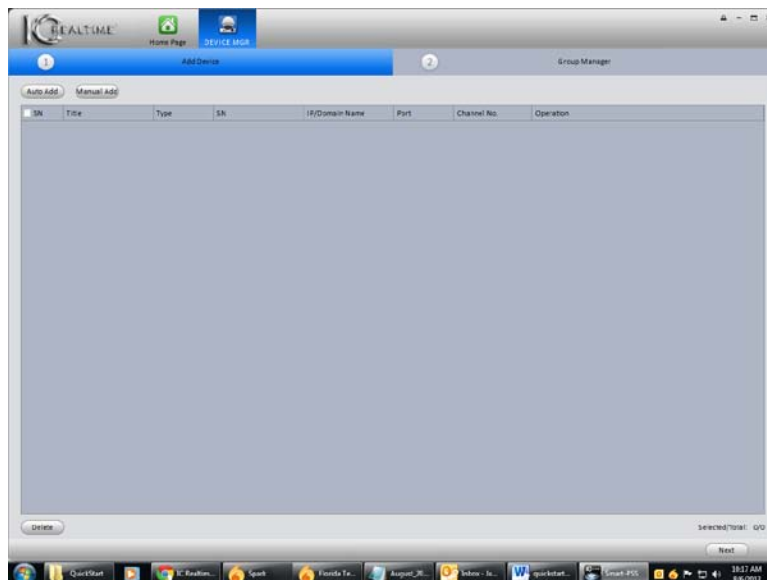


Figure 2-2

Step 3:

- **AUTO ADD:** click '**Auto Add**' to have the software automatically search the local network for devices. Please see Figure 2-3. Make sure that 'Create Group' has a check in its selection box. Click on '**Batch Add**' to add the selected devices. Please see Figure 2-4.

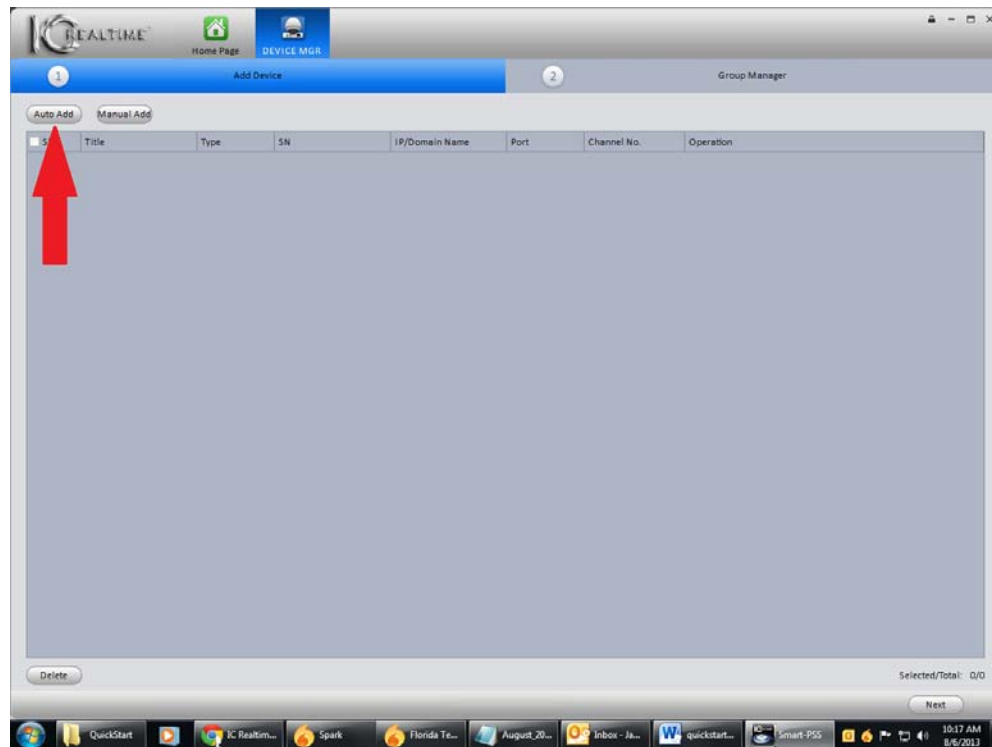


Figure 2-3

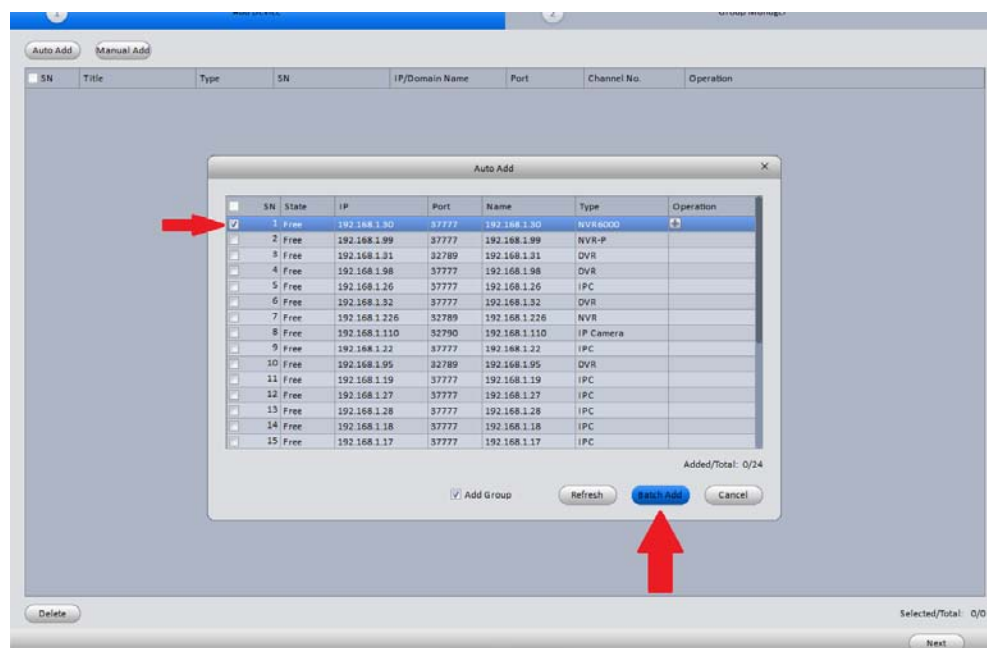


Figure 2-4

- **MANUAL ADD:** Click the '**Manual Add**' button at the top of the screen – the fields will become active. Please see Figure 2-5. Fill out the following page with your connection information. The '**Title**' is to associate a name with your device. '**Desc**' is a brief description (not required.). '**IP**' will be the actual IP address assigned to your device. '**Port**' is your connection TCP port of the device (typically 32789 or 37777). '**User**' is your user name to login with. '**Password**' is the password for your user name. Once you have these fields filled out, click '**Getting Info**' to make the initial connection and receive device details. Make sure that 'Create Group' has a check in its selection box. Click on the '**Add**' button to add the device to your device list. Please see Figure 2-6.

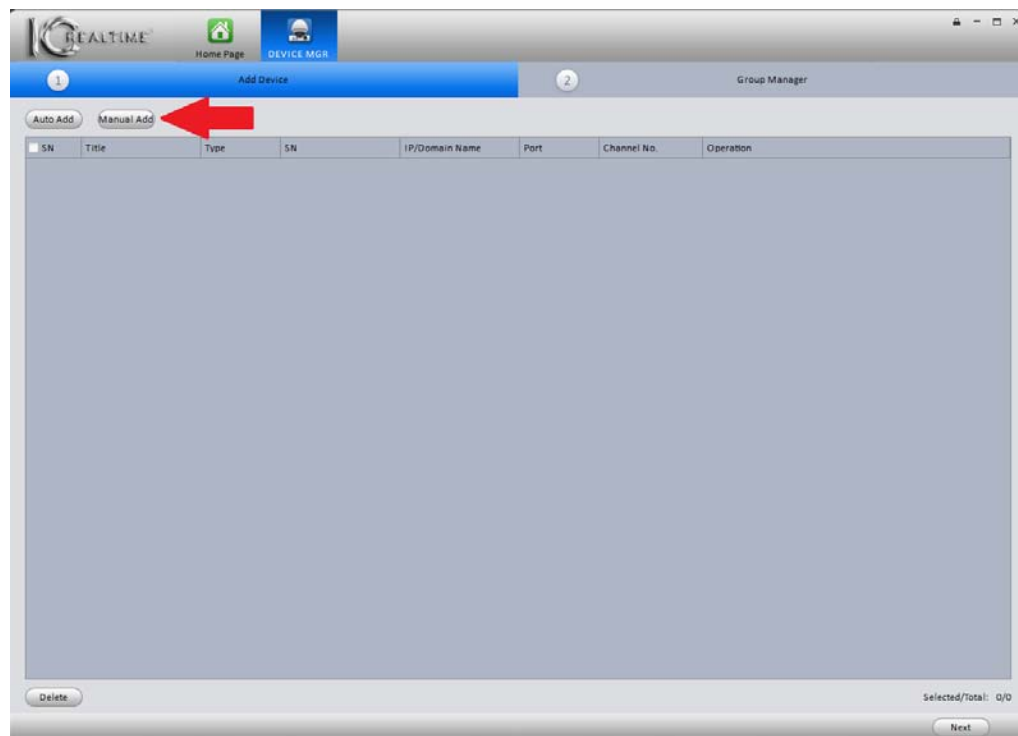


Figure 2-5

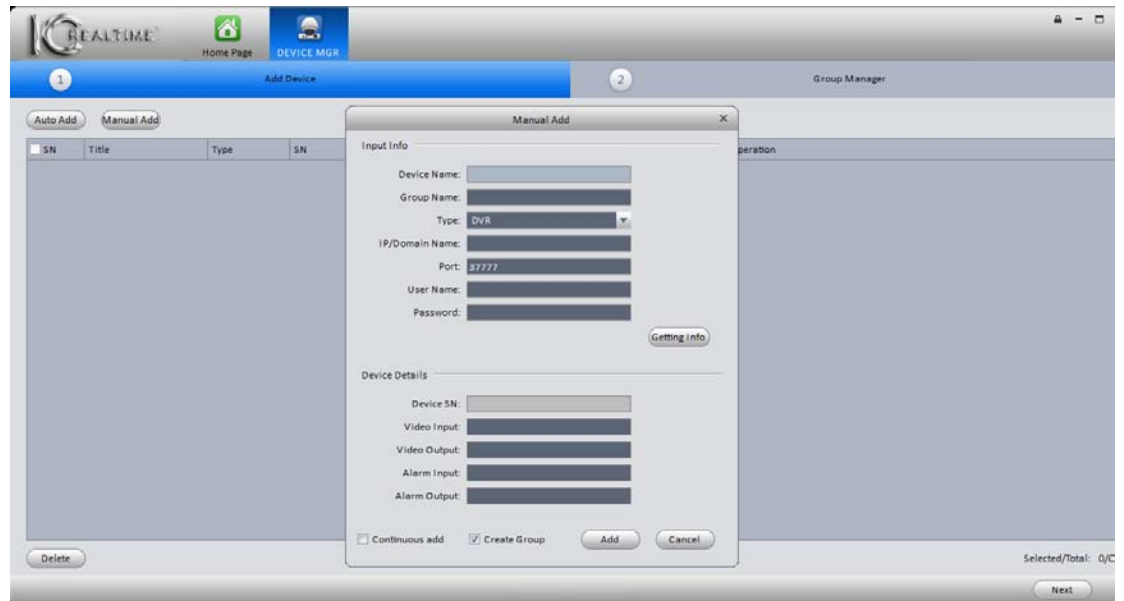


Figure 2-6

Click **'Next'** to continue to the Group Manager tab. In the Group Manager it is possible to configure specific View Groups. The administrator can limit specific users to defined channels using the View Groups. It is not necessary and by default there are no restrictions to the default View Group created. Click **'Finish'** at the bottom right corner when ready to continue. You will be brought back to the Home Screen. Please see Figure 2-7.

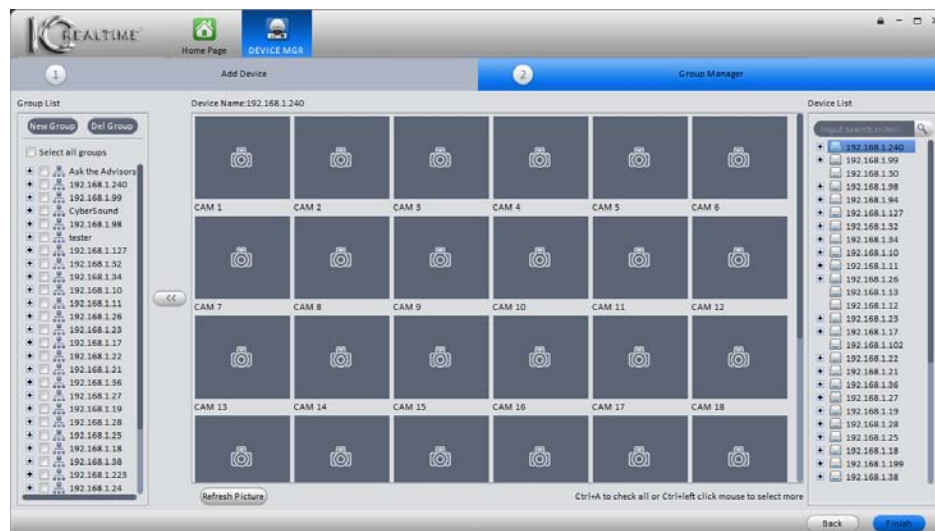
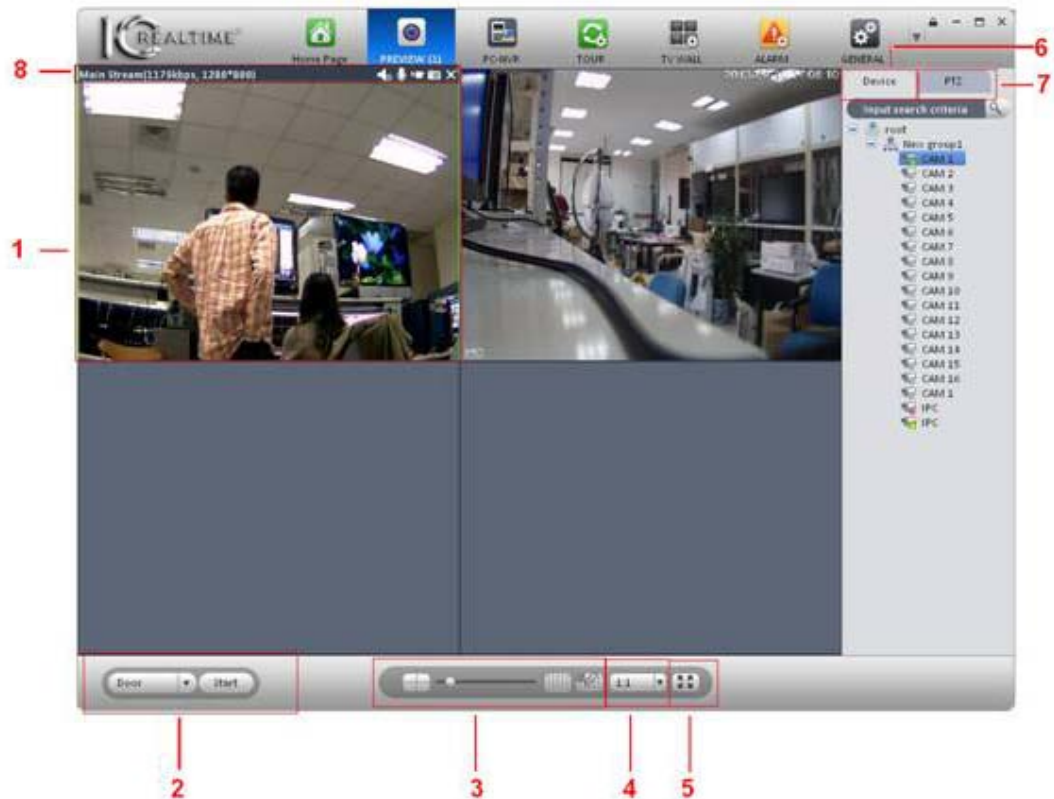


Figure 2-7

### 3) Viewing Live Cameras

If you've been following from the previous chapter, you should be currently connected to your device! This chapter will step you through arranging your cameras for live viewing.

Step 1: After successfully creating a new connection, click on the **'Preview'** icon. Click on the plus (+) symbol next to your device from your **'Device'** Tab. You will notice the (+) next to your device name – you can expand the camera list by clicking on the + symbol. Please see Figure 3-1 and Figure 3-2 for a detailed description.



### Figure 3-1






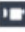

SN	Item	Function
1	Video window	Real-time video
2	Task window	<p>Select and enable a task.</p> <p>Note</p> <ul style="list-style-type: none"> <li>● If you have added task in the monitor task interface you can select corresponding task here and enable it. For detailed operation, please refer to chapter 3.10.</li> <li>● If you right click mouse and then select Save as a video task, you can save current video window and the channel open in current window as a task, you can select task and then enable.</li> </ul>
3	Window split mode	Here you can set window split mode. You can drag the slide bar or use  to select 8 window modes.
4	H/W ratio	It is for you to set window height/width ratio. It is to adjust the window to the original size or the suitable scale.
5	Full-screen	It is to go to full-screen mode. You can double click window or right click mouse to select exit full screen.
6	Device	<p>Display device and channel.</p> <p><b>For a device or a channel that is not included in the a group, you can not view the device or the channel on the device list.</b></p>
7	PTZ	It is to set PTZ preset, tour, aux function and etc.
8	Bit stream information and shortcut operation	<p>Here you can view bit stream information and short cut operation.</p> <ul style="list-style-type: none"> <li>●  Turn on/off the audio.</li> <li>●  Turn on/off the microphone.</li> <li>●  Turn on/off record.</li> <li>●  Snapshot.</li> </ul>

Figure 3-1

Step 2: To connect to all of the cameras at once, you can simply click-and-drag the DVR icon over to the viewing grid, in order to connect all cameras at the same time. Alternatively, once you see your list of cameras beneath the device, you can connect to the video stream by double clicking the specific camera name. Your video will move to the viewing box that is outlined in green. To change your total number of video windows or window layout, select from your views number at the bottom of the interface.

#### 4) Channel Playback

We previously explained how to connect and view live cameras. This chapter will explain how to perform a search, and also backup the recorded video.

Step 1: Once logged in to the software as well as your device, click on '**Playback**'. Please see Figure 4-1.

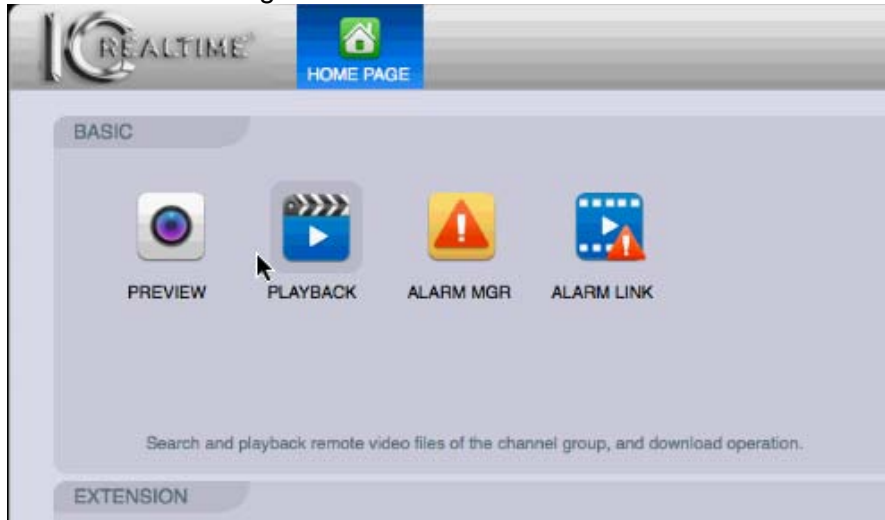


Figure 4-1

Step 2: Choose a device from the '**Device**' pull down menu, and also choose a camera from the following pull down menu. Please see Figure 4-2. Select a date from the calendar. Click on '**Query**' to find all recordings for the selected camera on the selected date. Please see Figure 4-3.

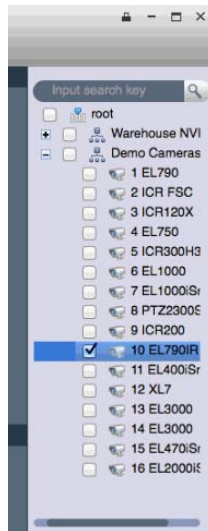


Figure 2-2



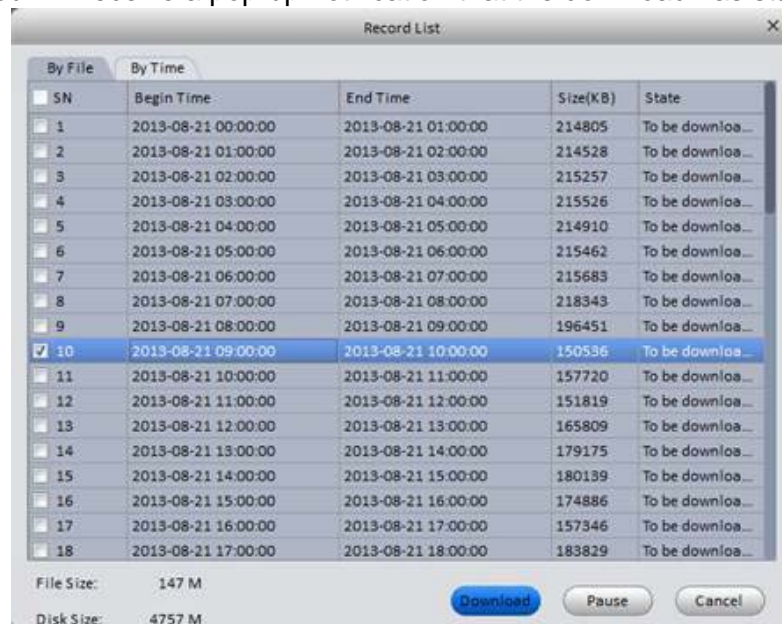
### Figure 4-3

**Step 3:** Your results will be in the timeline found on the bottom on the interface. The small arrow (pointing down) next to the Window Name, will allow you to select the **TYPE** of recording to view. To start one of the results, simply double click on the start time from your **timeline**. Please see Figure 4-4. Note your playback will move to the highlighted (green) video window. From here, you can manipulate the video using the playback controls at the bottom left.



### Figure 4-4

Step 4: If you would instead like to download or backup your video, place a check next to your desired camera and select a date. Click the **'Download'** button at the bottom. You will see all recordings for your selected camera and date. Select the desired file and click on **'Download'** found at the bottom of the window. Please see Figure 4-5. You will receive a pop-up notification that the download has started.



### Figure 4-5

Step 5: You can view the downloaded file in ClearviewRemote. Click on the 'Home' icon to return to the Home screen. Click on 'Local Data' icon. On the Local Data screen you can click on 'Local Rec' button found at the bottom. Select the desired file and playback will begin. Please see Figure 4-6.

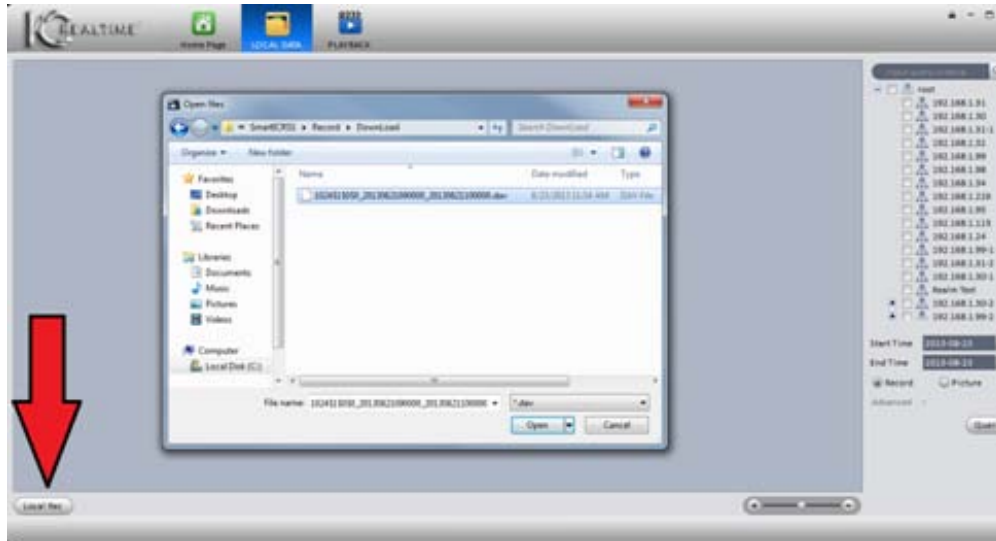


Figure 4-6

## 5) Predetermined Views – Tasks

This section will cover the creation of a specific template of cameras, in predetermined locations. The software refers to this function as a 'Task'. This is a useful way to quickly connect and disconnect cameras.

Step 1: Once logged into the software, click on '**Tour**', and then click on the '**Add Task**' button. You should see the interface as in Figure 5-1.

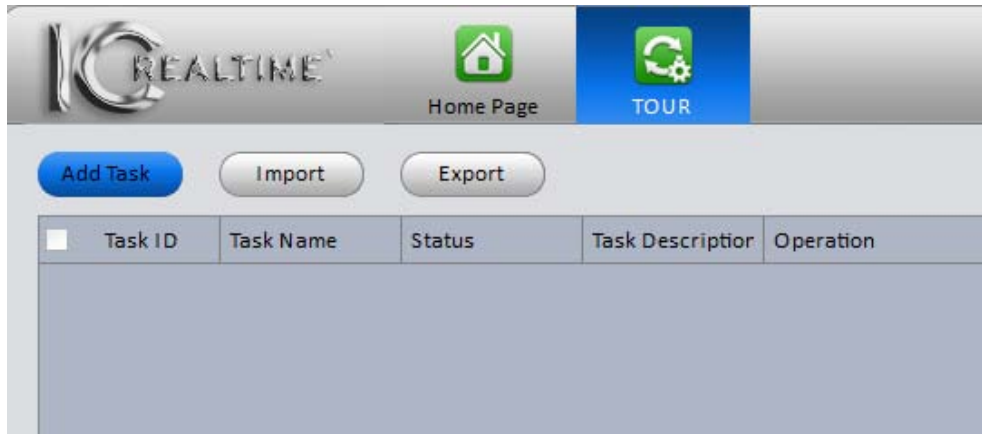


Figure 5-1

Step 2: On this page, fill in a Task Name and Description. The drop-down menu labeled '**Wind num**' allows you to select the number of viewing squares. Click and drag the desired cameras into the appropriate Window Tab. You can move list items up and down according to desired order of streams. Click on '**OK**' when done. Click on the '**Home**' icon at the top to return to the main screen. Please see Figure 5-2.

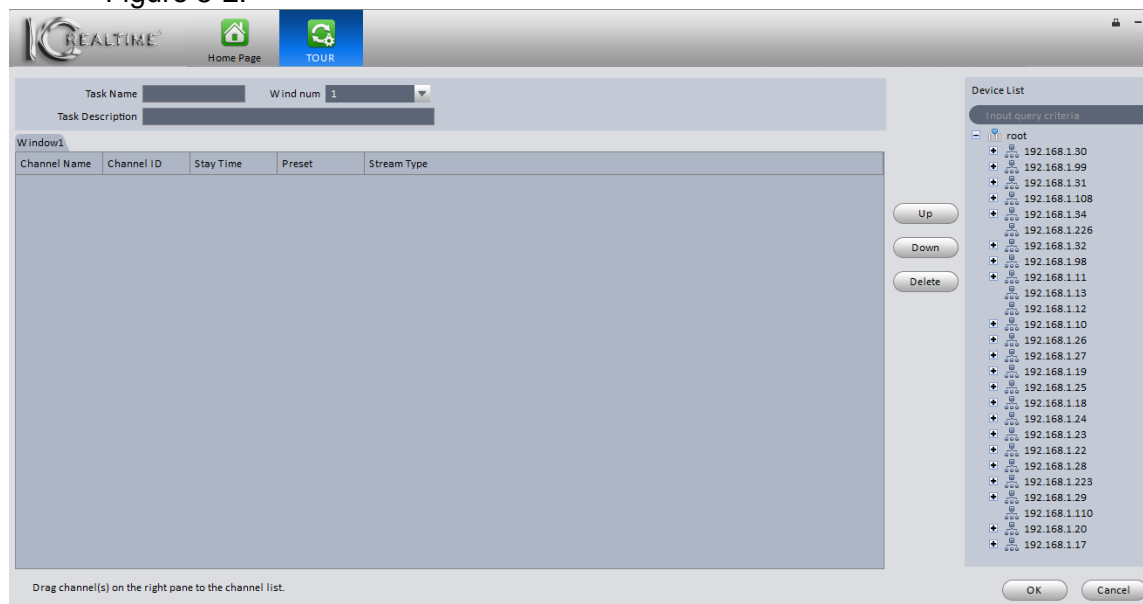
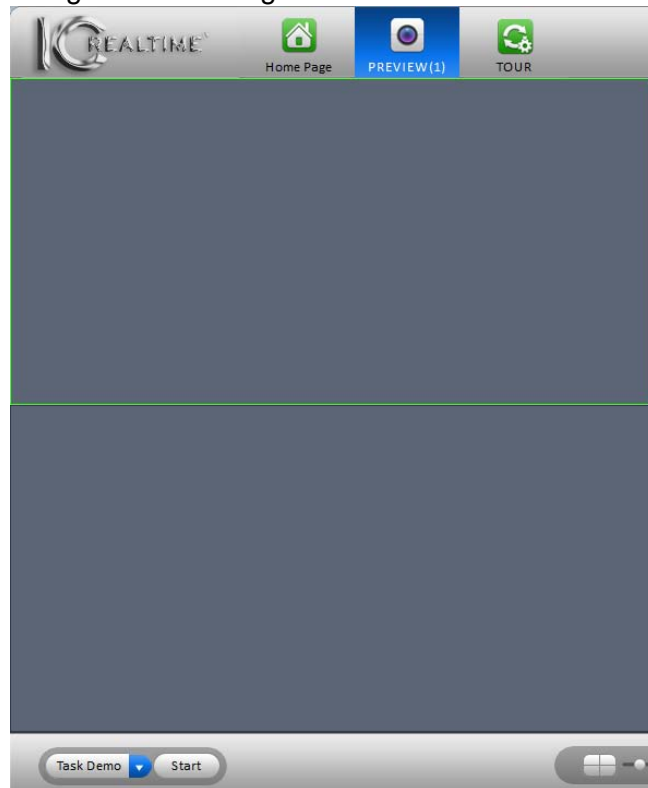


Figure 5-2

Step 3: At this point, you can start the created Task from the '**Preview**' screen. The Task '**Start**' button is located on the bottom left side of the 'Preview' interface.

The task will begin after clicking the 'Start' button. Please see Figure 5-3.



**Figure 5-3**

## 6) E-Map

This section will guide you through creating an E-Map. An E-map is a logical representation of where you cameras are *physically* located.

Step 1: Open the ClearviewRemote software by double clicking on the desktop icon (Please see Figure 6-1).

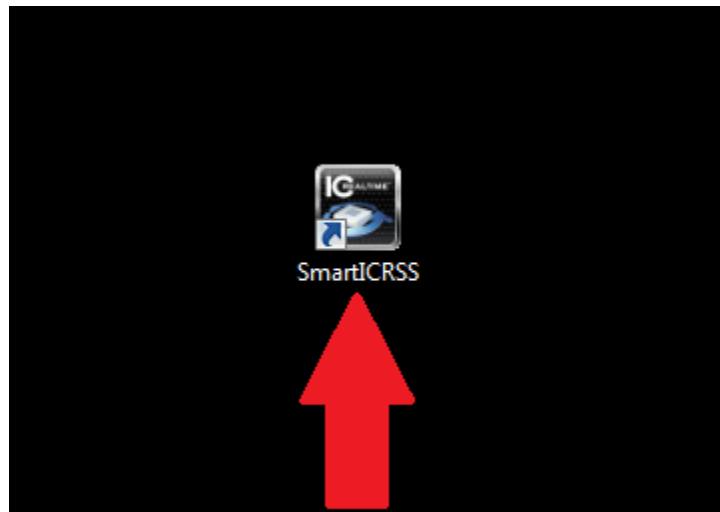


Figure 6-1

Step 2: Once the ClearviewRemote is loaded, click on the Emap icon (Please see Figure 6-2).



Figure 6-2

Step 3: Click on Add Map near the center of the window. Insert a distinct name into the 'Name' Field. Click on the File button to select the desired floor plan (Please see

Figure 6-4). Entering a description is optional. Finally, click the Save Button (Please see Figure 6-5).

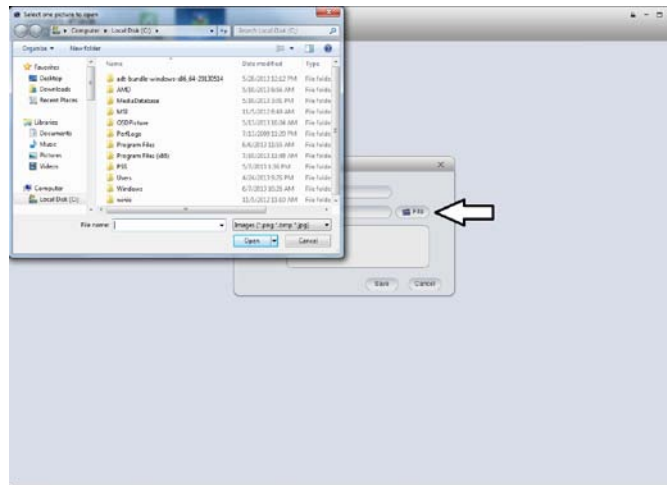


Figure 6-4

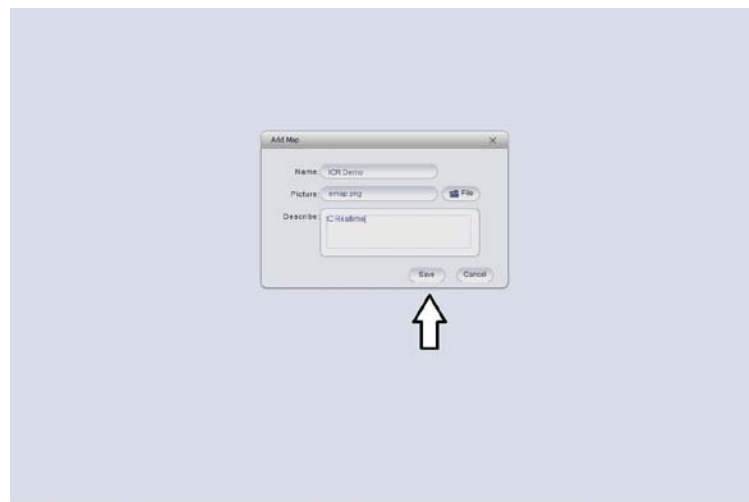
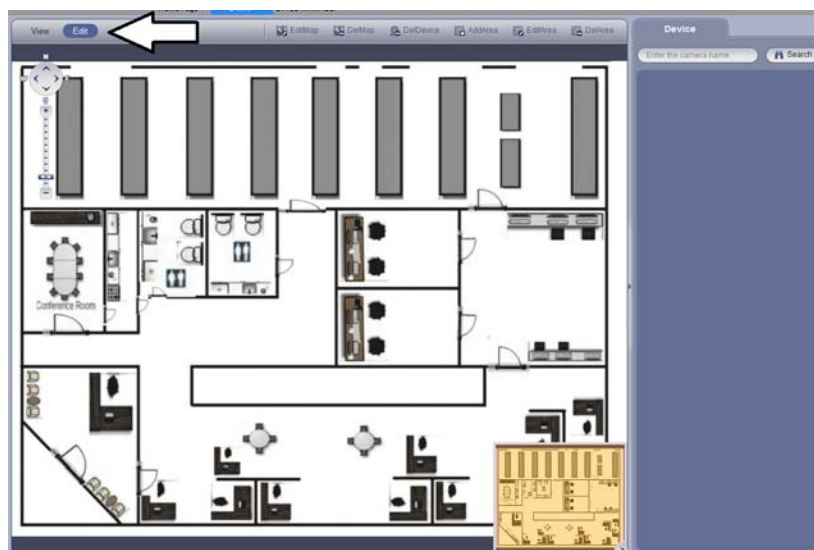


Figure 6-5

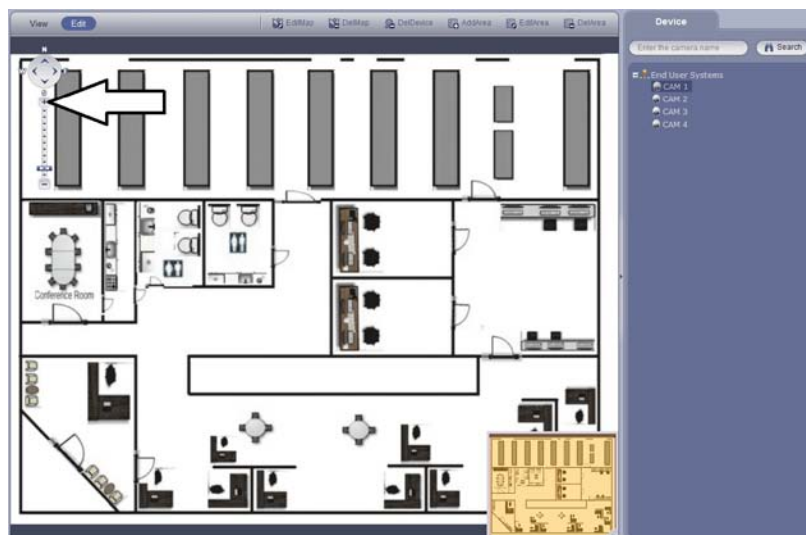
Step 4: Click on the 'Edit' button near the top-left corner of the window (Please see Figure 6-6).





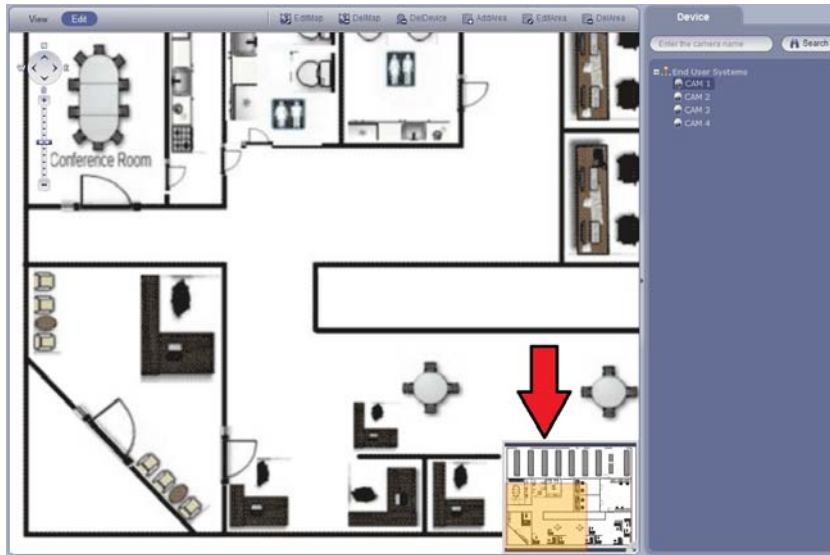
**Figure 6-6**

Step 5: If necessary, zoom into the desired area using the Zoom tool on the left side of the screen (Please see Figure 6-7).



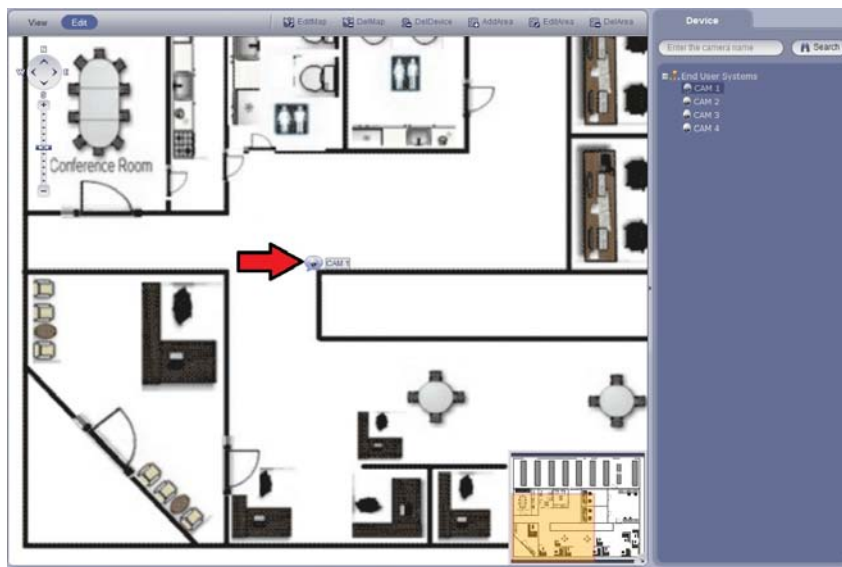
**Figure 6-7**

Step 7: Use the Preview area to pan around to a desired section of the floor plan (Please see Figure 6-9).



**Figure 6-9**

Step 8: Click-and-Drag the appropriate camera device from the Device list to the desired location on the Emap. (Please see Figure 6-10).



**Figure 6-10**

Step 9: Additional Areas can be added to the Emap. Click on 'Add Area' button near the top of the window to select an additional floor plan to add (Please see Figure 6-11). Click-and-Drag the new Area to an appropriate location. Double-click on the new Area to view (Please see Figure 6-12). To return to the main Emap, click on the bottom-left corner of the window (Please see Figure 6-13).

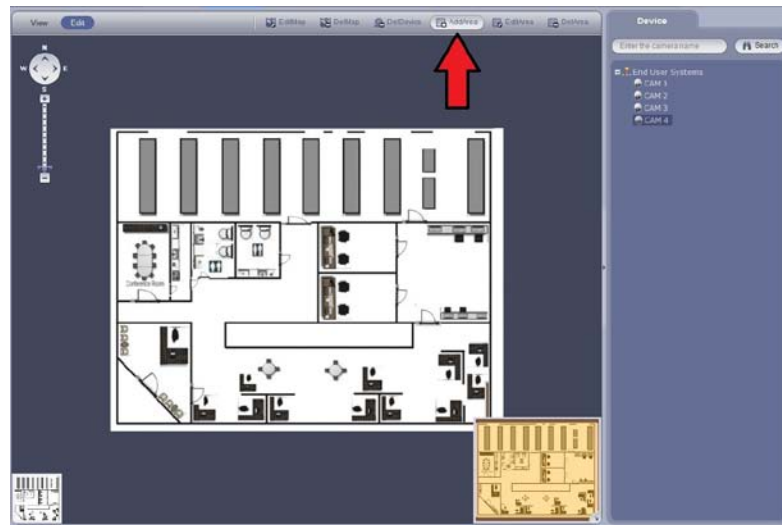


Figure 6-11

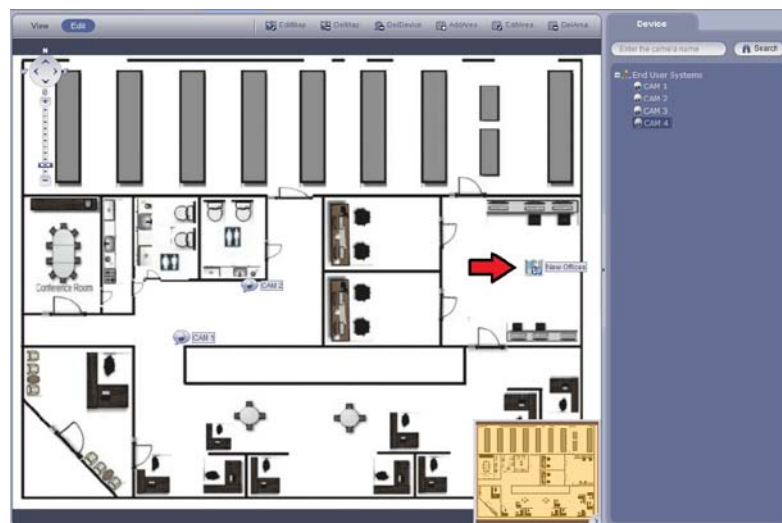
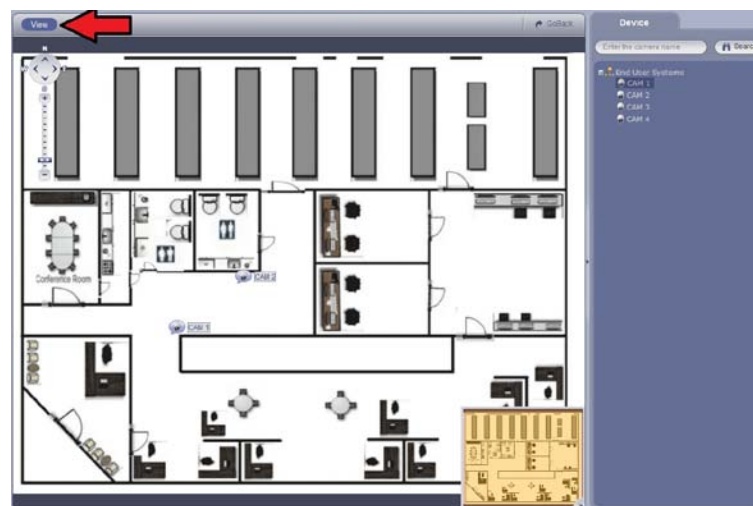


Figure 6-12



**Figure 6-13**

Step 10: Once all adjustments have been completed, simply click on the 'View' button near the top of the window (Please see Figure 6-14). Double-click a camera device to view the video feed from that camera device (Please see Figure 6-15).



**Figure 6-14**

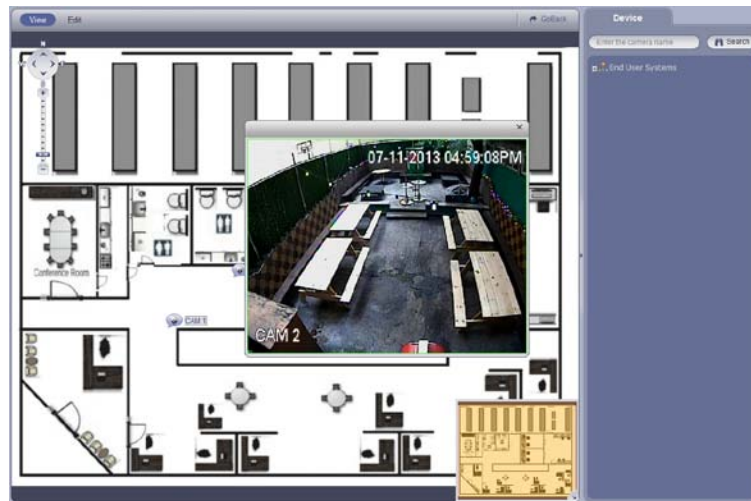


Figure 6-15

## 7) Software Configuration

Chapter 7 will discuss the software level configuration options from the '**Config**' option. This menu contains useful options such as changing save directories, auto resume previous screen-state, and even an auto start task function.

Step 1: Once logged into the software, click on the '**General**' icon. Control tabs can be found on the left side of screen. On the 'General' tab screen you will find the ability to configure network bandwidth and Log save-duration. In the 'Display Config' sub-section you can select to Resume Preview State. You can also select to auto-start and/or auto-login the software when the computer starts. Language and Time settings are also available on this screen. Please see Figure 7-1.



Figure 7-1

Step 2: Click on the '**File**' tab on the left side of the screen. On this screen it is possible to change the default download directories. Please see Figure 7-2.



Figure 7-2

Step 3: Click on the '**Version**' tab on the left side of the screen to check the current version number and release date. Please see Figure 7-3.

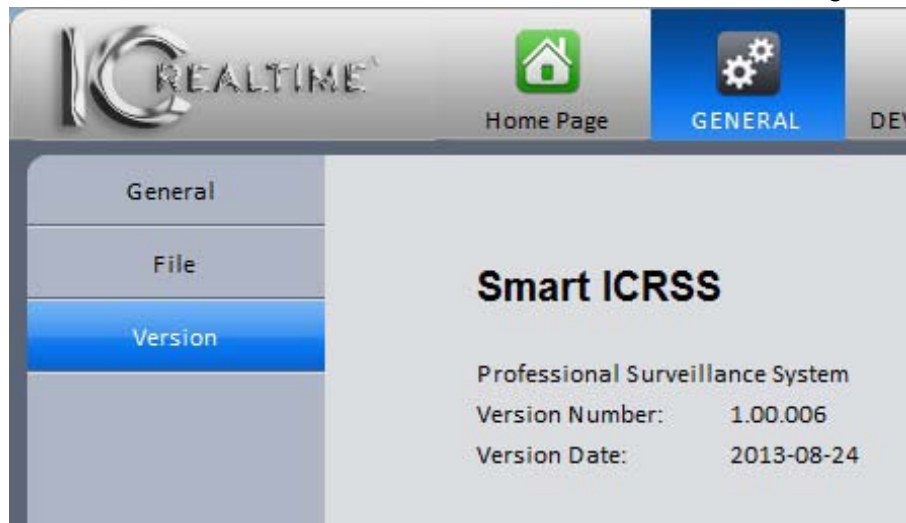


Figure 7-3

## 8) PC-NVR

The PC-NVR feature allows the user to allocate space on the local computer to be used as an extension of the recorder's storage drive. Recording and Playback is seamless. PC-NVR must be installed in order to use this feature.

Step 1: Click on the '**PC-NVR**' icon. Click on the '**Search**' button to locate any available PC-NVR virtual devices. Please see Figure 8-1.

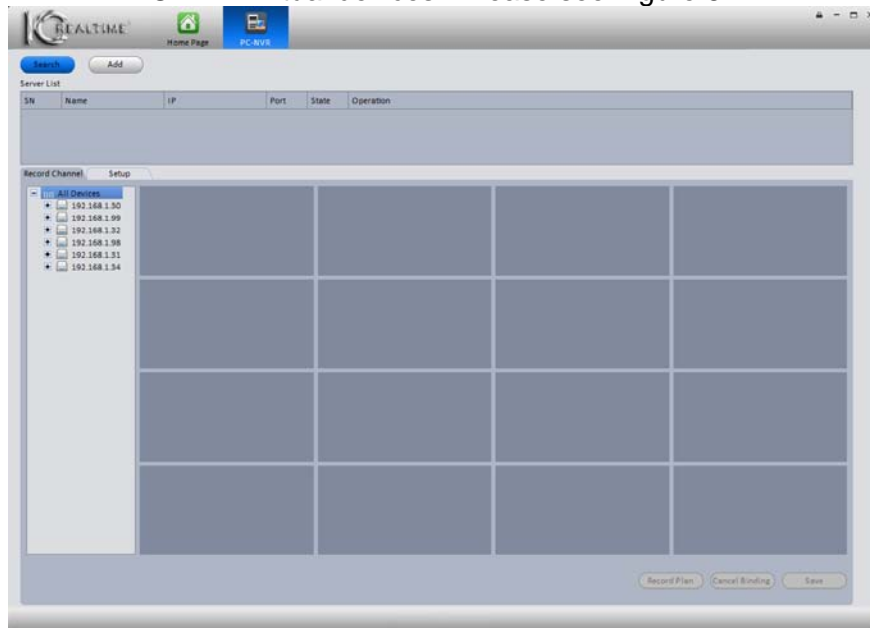


Figure 8-1

Step 2: Select the desired PC-NVR and click on the '**Add**' button at the bottom of the window. Please see Figure 8-2. Click on the '**Setup**' Tab and then select '**HDD Manager**'. Please see Figure 8-3. Highlight the desired device and click on the options button. Select the amount of storage to dedicate to the PC-NVR, and click on '**Allocate**'. The PC-NVR is now ready to be used by the system when necessary.

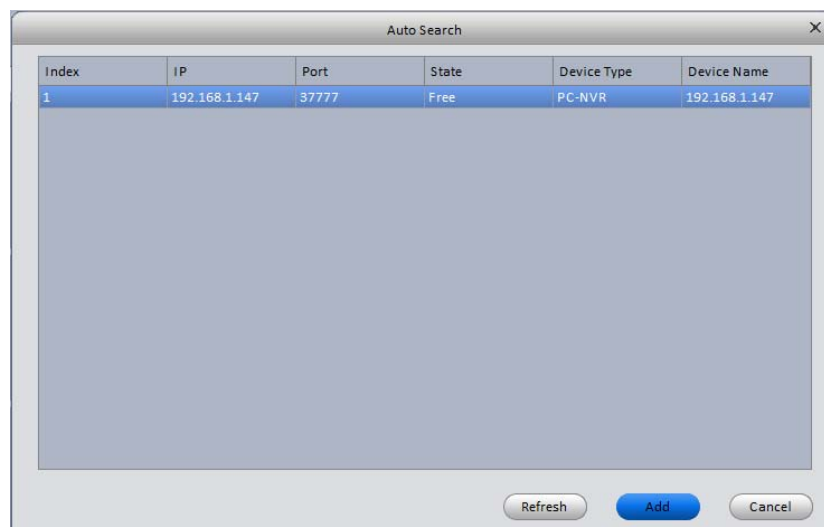


Figure 8-2



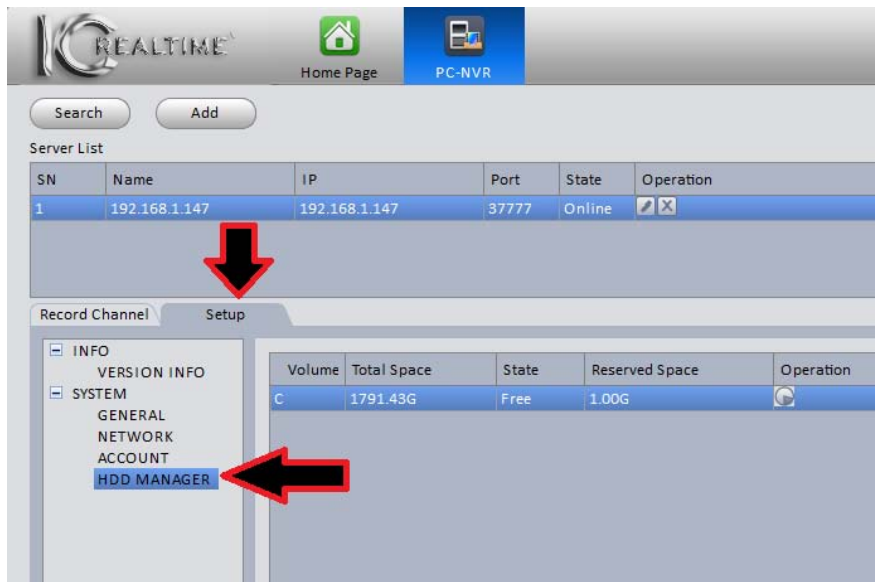


Figure 8-3

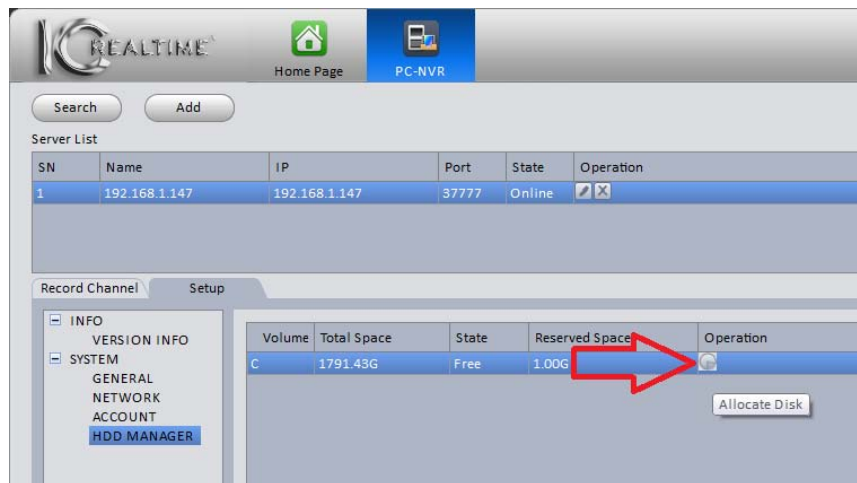


Figure 8-4

*For further information or troubleshooting assistance on this software or any of our products, please visit <http://icrealtime.com/support>*