



## CLEARVIEW KIT INSTALLATION GUIDE

### Kit contents

1. Recorder with power supply
2. Camera Cables
3. Cameras
4. Mouse

\*\* Display monitor and HDMI cable not included



Remove recorder from the Kit and look over the connections on the back.



Locate the recorder power supply and plug it in to the rear of the recorder.



Plug the power wire in to the power supply then plug the power wire in to the wall outlet.



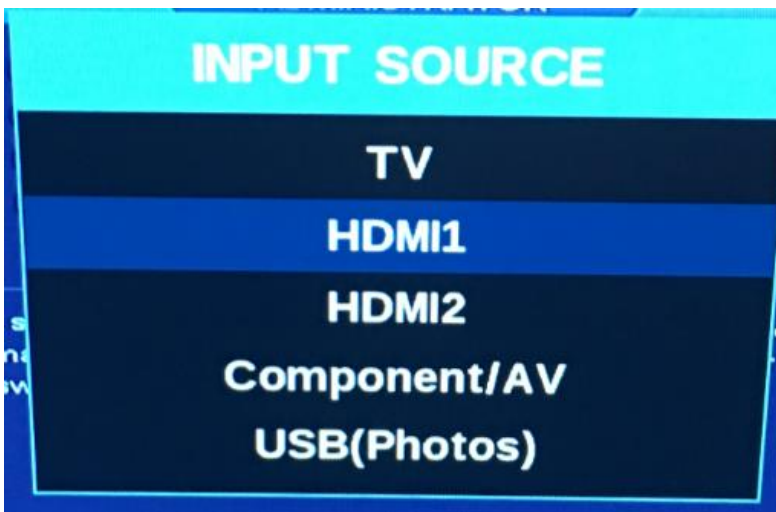
Plug your display monitor (not included) in to the wall outlet



Plug your HDMI cable (not included) in to the recorder and your display monitor.



Connect the network cable to the recorder. Connect the other end of the network cable to your Router.



Double check to make sure your monitor is set to the correct input



Remove the mouse from the kit. The two buttons on the mouse do the following. Left click chooses the option you are on whereas the right mouse button goes backwards 1 screen. So if you are ever on the wrong screen, right click the mouse to go back.

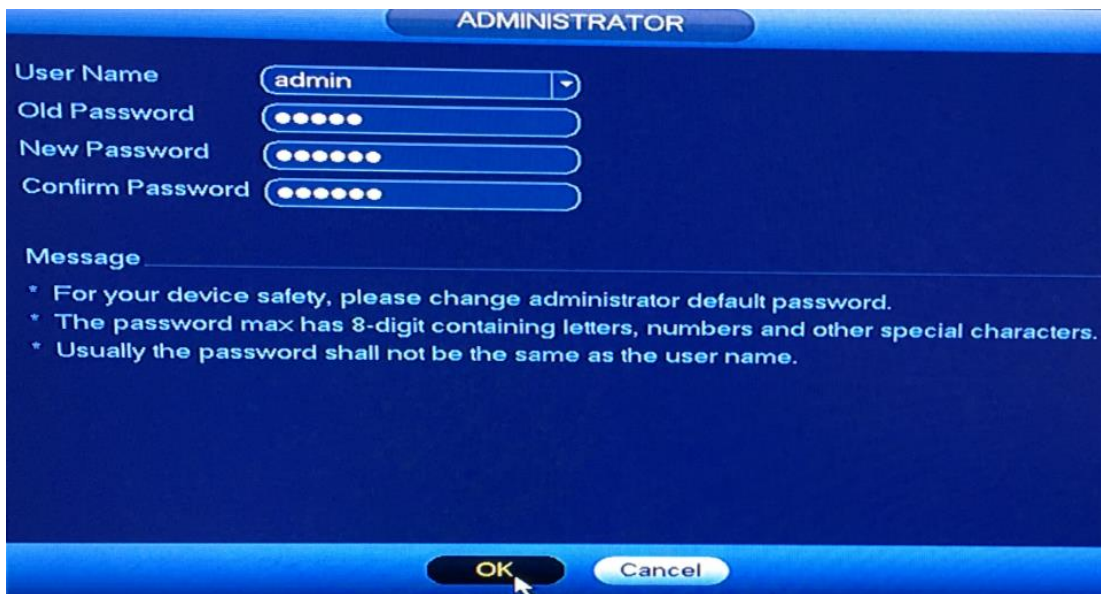




Plug the mouse in to any USB port on the back of the recorder.

The system will immediately prompt you to change your password from the default setting. To do this just click the mouse on the area you want to type the password in and a digital keyboard will pop up on screen.

By default, your admin username and password will both be “admin”. When you enter the new password make sure you write it down somewhere. Also be aware the password is case sensitive. If the new Password is “ADMin” make sure you note where you used capital letters.



ADMINISTRATOR

User Name

Old Password

New Password

Confirm Password

Message

- \* For your device safety, please change administrator default password.
- \* The password max has 8-digit containing letters, numbers and other special characters.
- \* Usually the password shall not be the same as the user name.

Once you have entered the new password, click “OK” at the bottom of the screen.



Startup Wizard

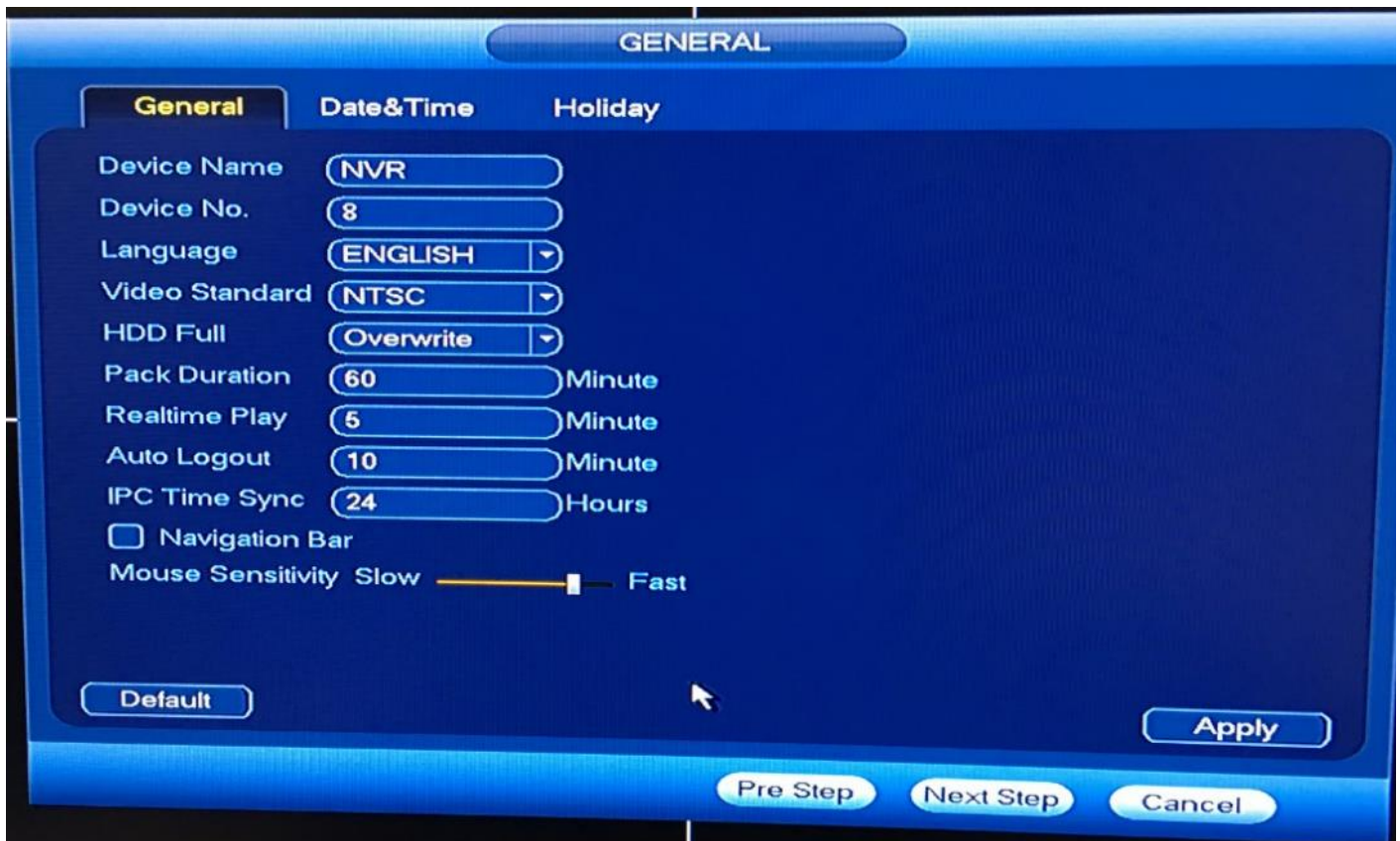
Startup Wizard

The startup wizard includes General, NetWork, Remote Device, Schedule.

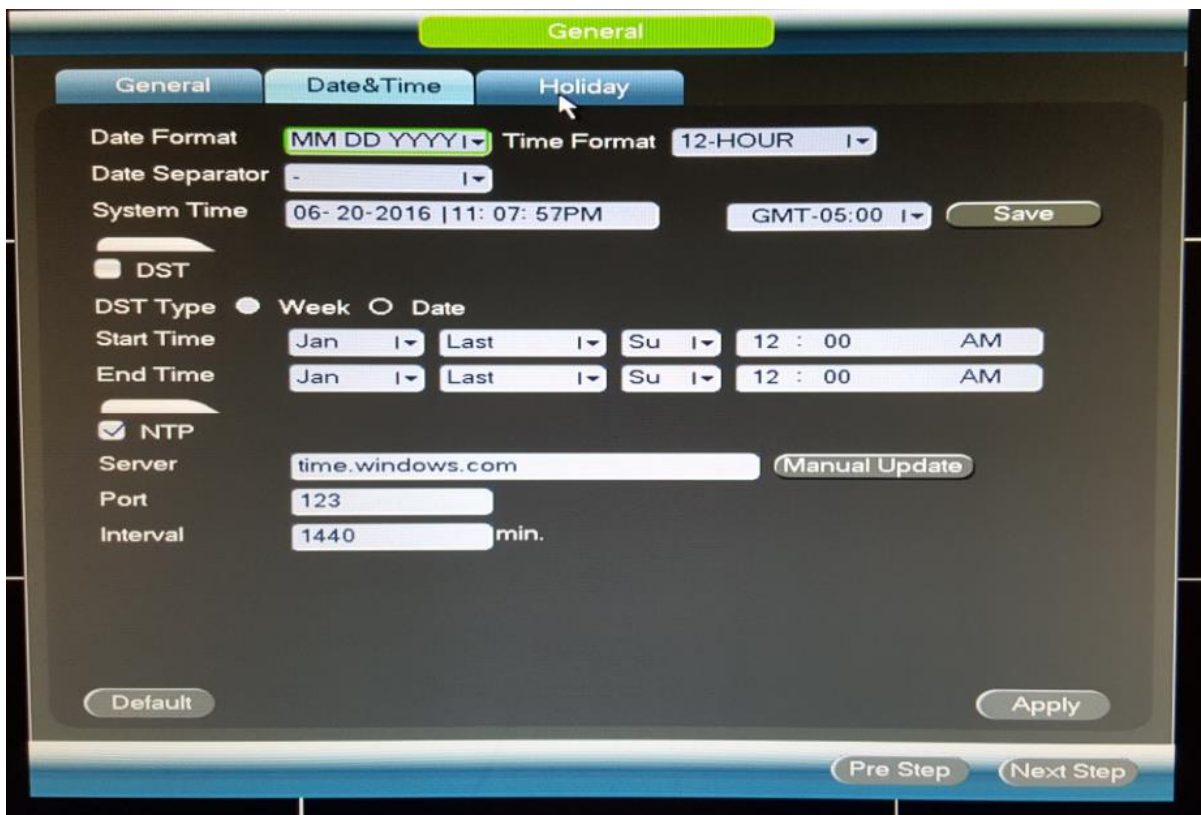
☒ Startup

Next you will be prompted to start the startup wizard. Click “next step”

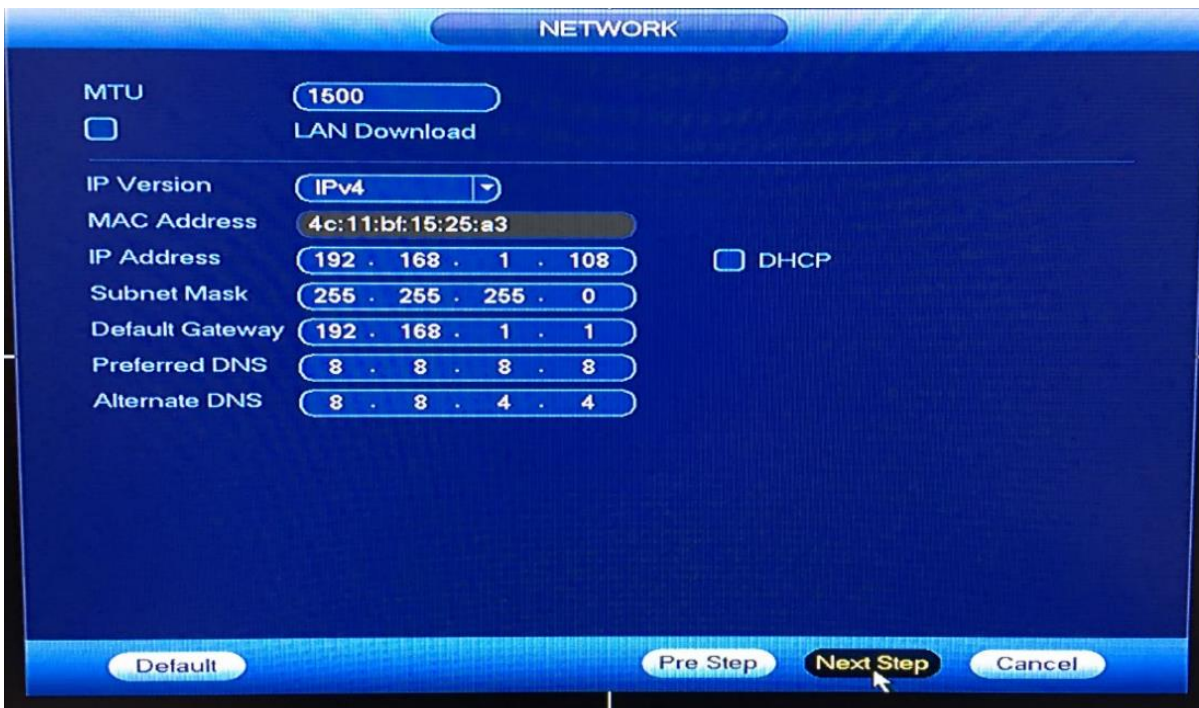




The general Tab in most cases will be left at the default settings. Click next step without making any changes to this screen.



On the date and time screen, set your date and time along with your time zone. Click Apply then next step.



The next screen will be your network set up. In most cases you will just need to check the DHCP box you see on the right side of the above image. Then click next step. Most networks will assign an address to anything that's connected to it. By checking DHCP this allows your network to assign the network credentials rather than you doing it.

Should this not work or if you know ahead of time that a network admin controls the network ask them for the following information and put it in the appropriate place above.

IP address

Subnet mask

Default gateway

Then click next step.

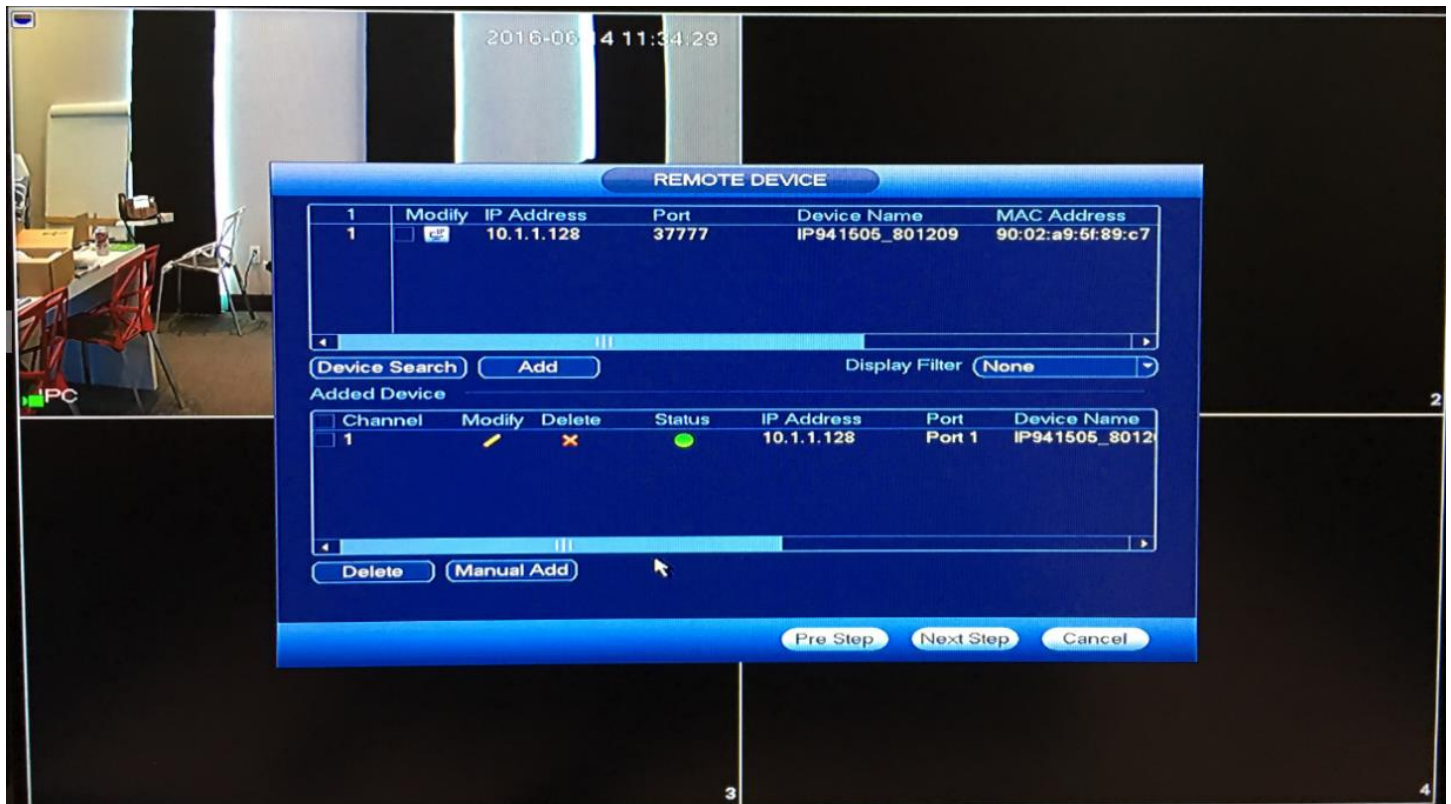


Now run your wire that is included in the kits, install your cameras and plug them in to the back of the recorder.



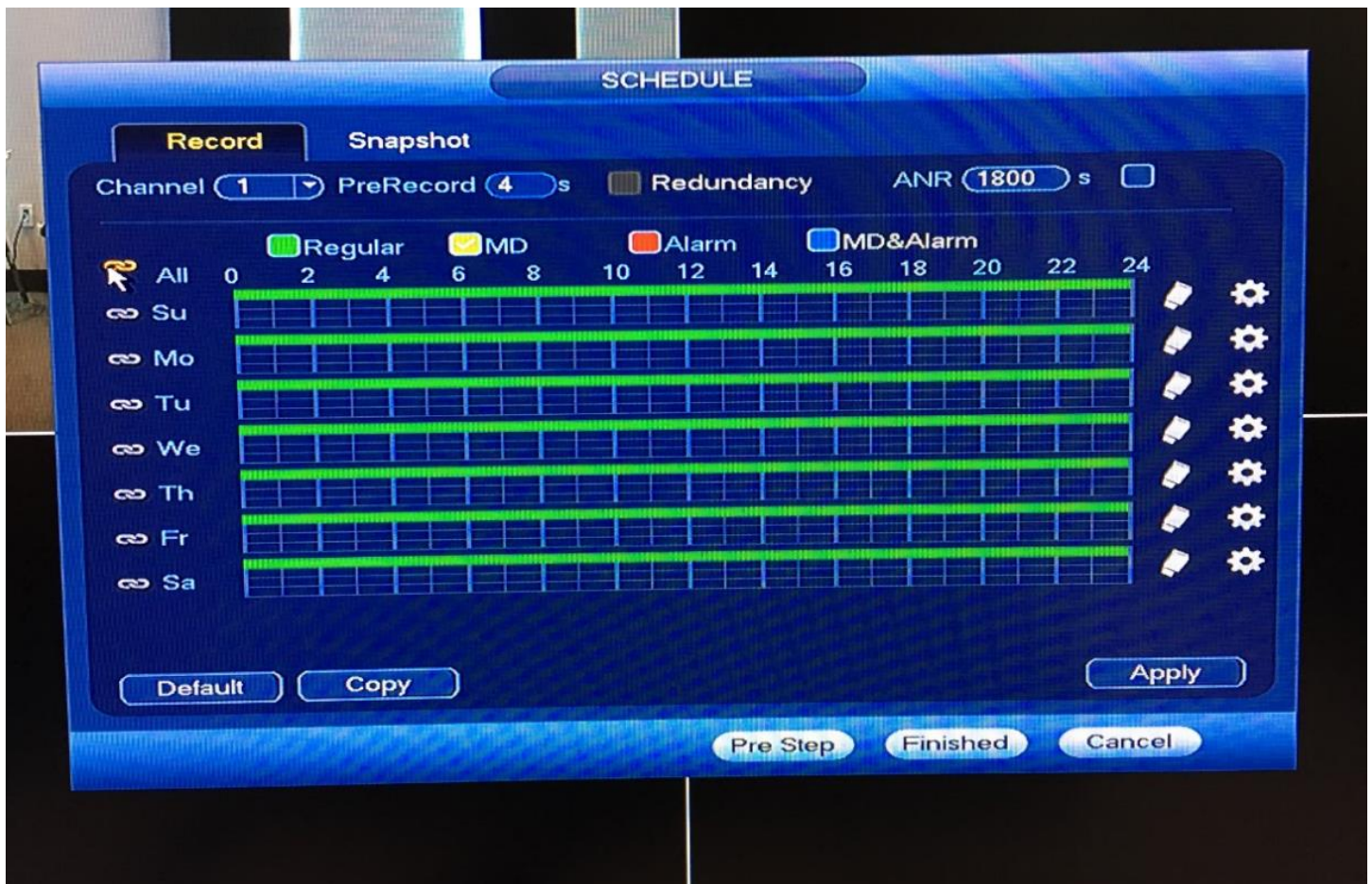


Once your cameras are connected, your next step is to have the recorder search and connect to them. Click “device search” at the top left.

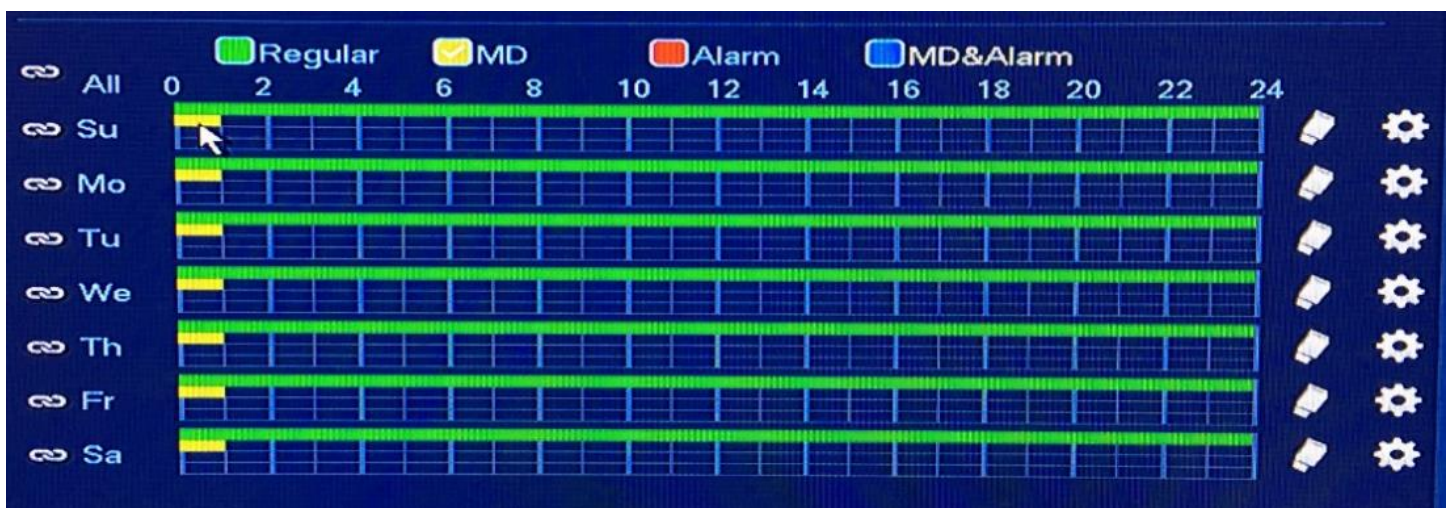


If you connected 4 cameras, you will see 4 devices listed, if you connected 8 then you will see 8. Now click on a device and then click the “add” button at the top left. Do this until all devices are added. You will start to see the cameras come up on the screen behind the menu. Click “next step” when finished.



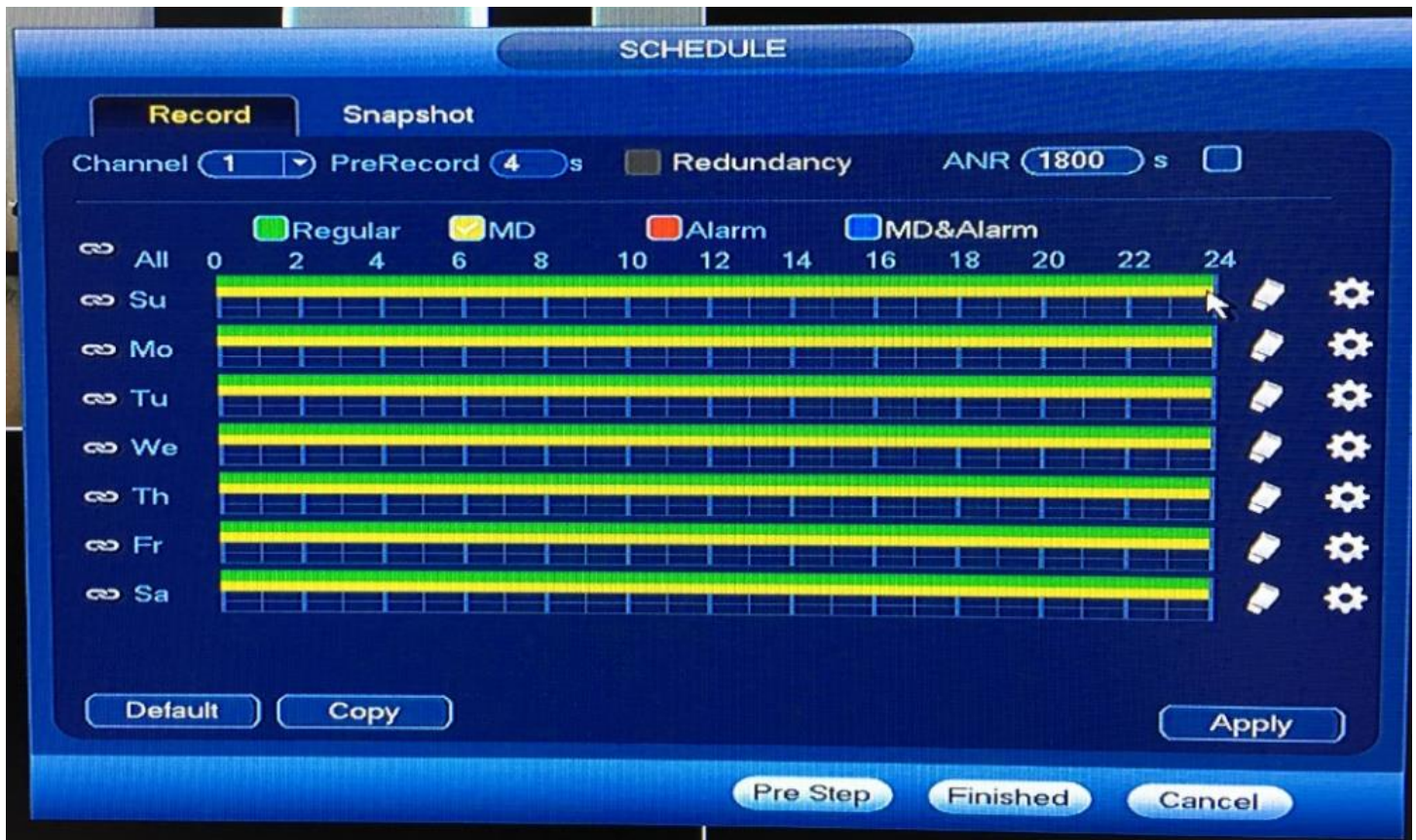


Your next screen tells the recorder how you want your recordings controlled. As you can see the color green stands for “regular” recording. That means it will record constantly. Below on the schedule, it shows all cameras with a green line 24 hours a day 7 days a week. So by default your system is already recording.



Yellow or “MD” stands for motion detect. Many installers prefer to record constantly but they would also like the system to mark the motion events so they are easier to find. To do this use your mouse. To do this click the icon next to the word “all” right above the days of the week. Then use your mouse to drag the yellow line across the 24 hour period. As shown.





Once you add motion detect as described above, your screen will look like this. Click “apply” then click “finished”.

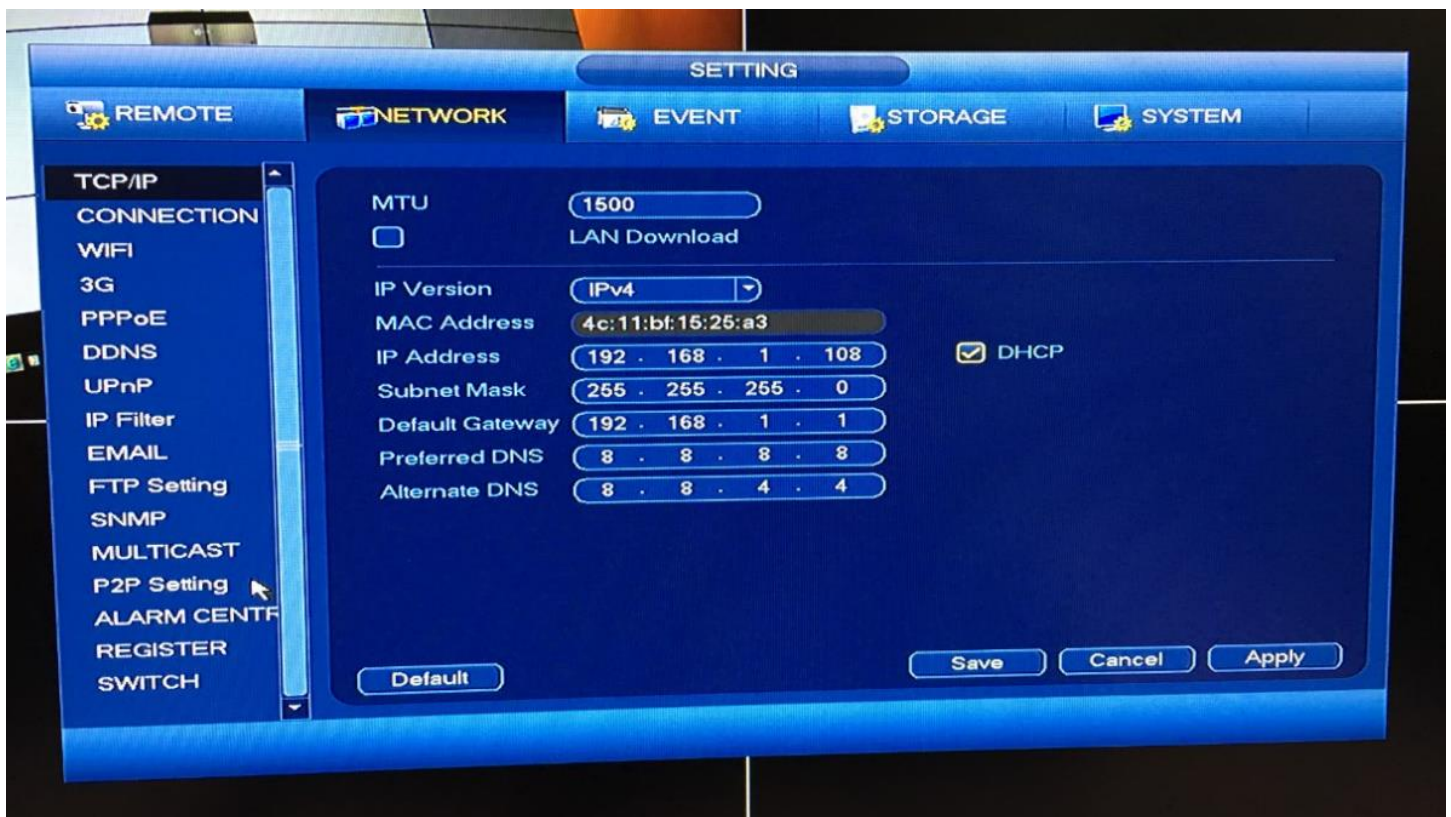
## Remote Viewing Setup



Right click the mouse anywhere on the screen and you will see this menu pop up. Once you see this, click “Main Menu”

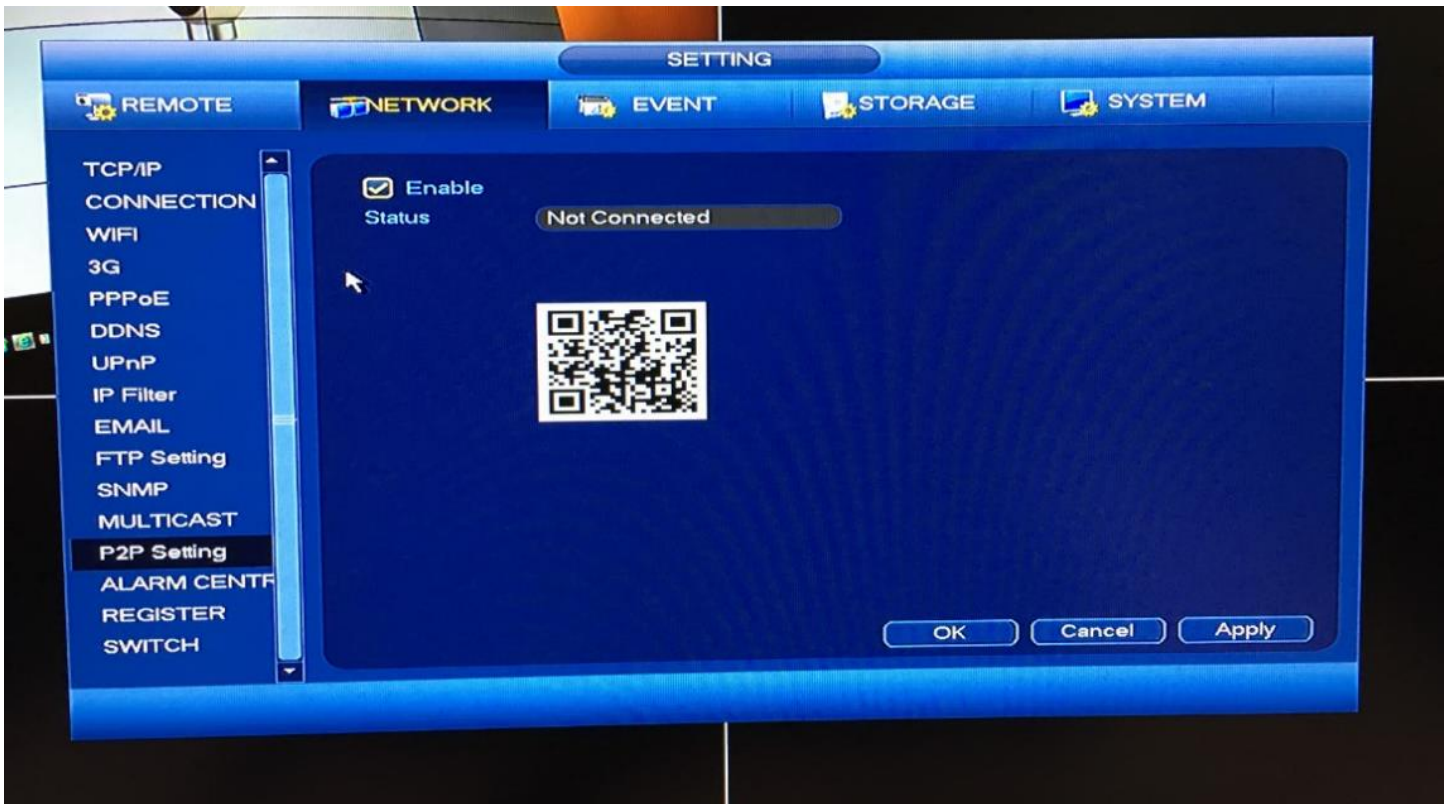


On the Main Menu screen you will notice 3 sections. Operate, Info and Setting. Click on the “network” button under setting, not under info.

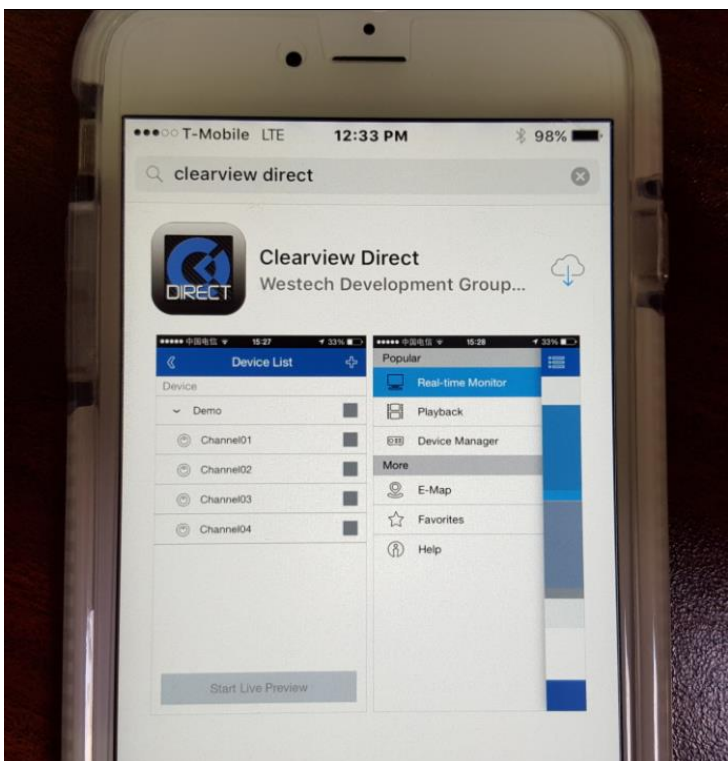


Once on the network screen look to the left side, you will see an option called “P2P setting” click that.

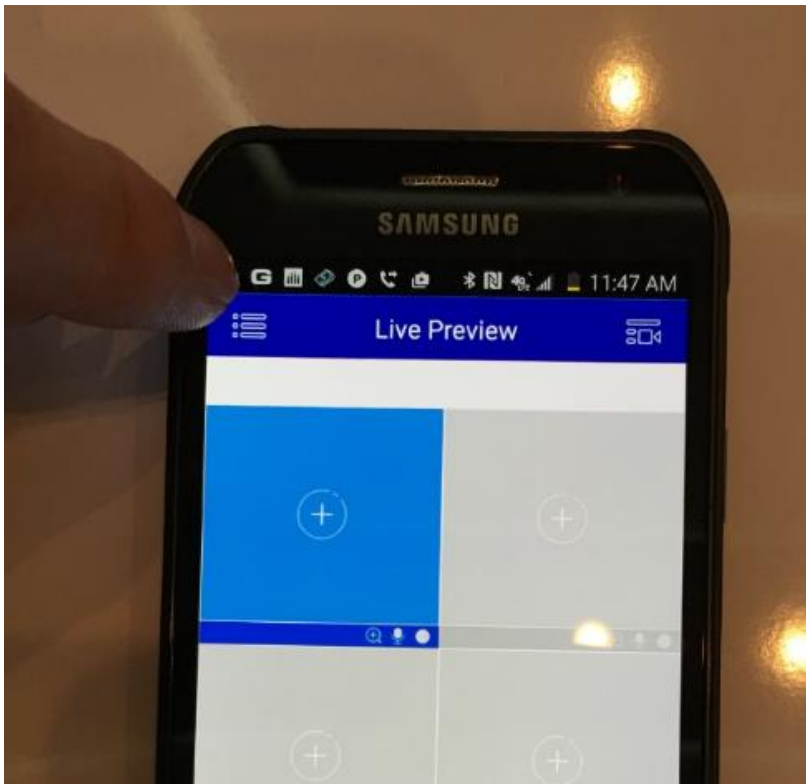




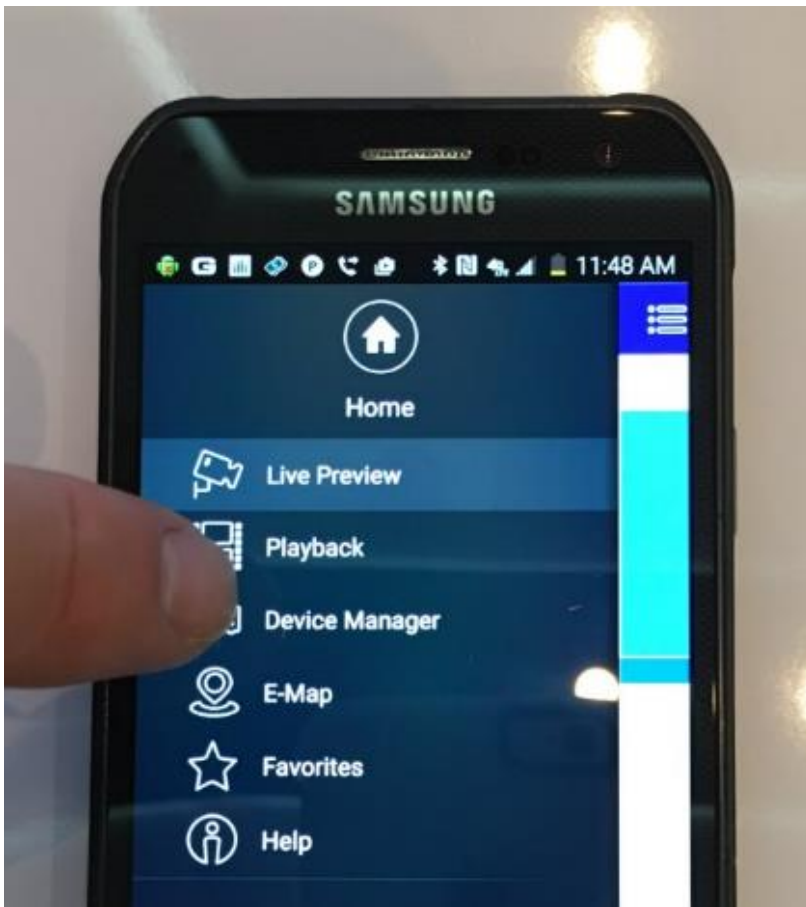
Make sure the option for P2P is enabled as it is here. Now you will leave this screen showing and we will come back to it in a moment.



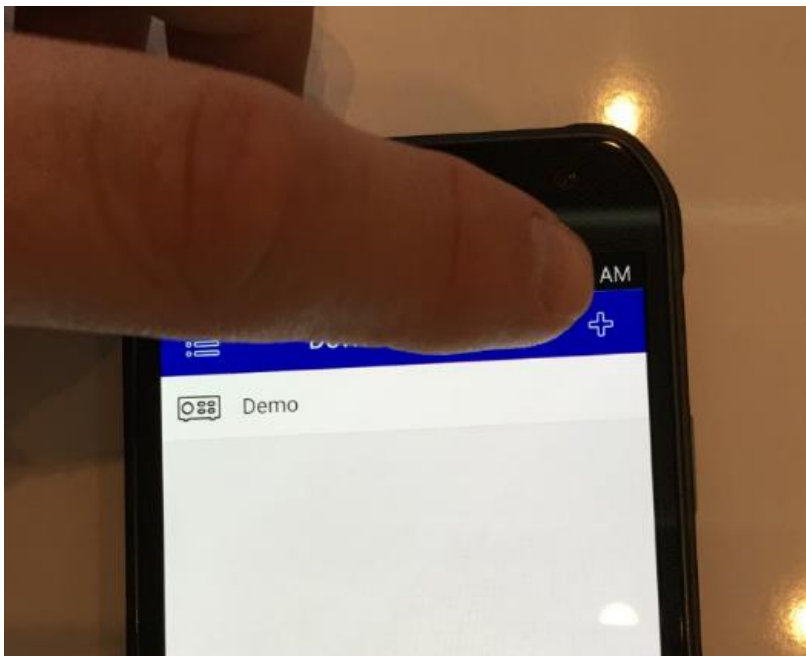
Go to the app store on your mobile device and search for ClearView Direct and download that free app.



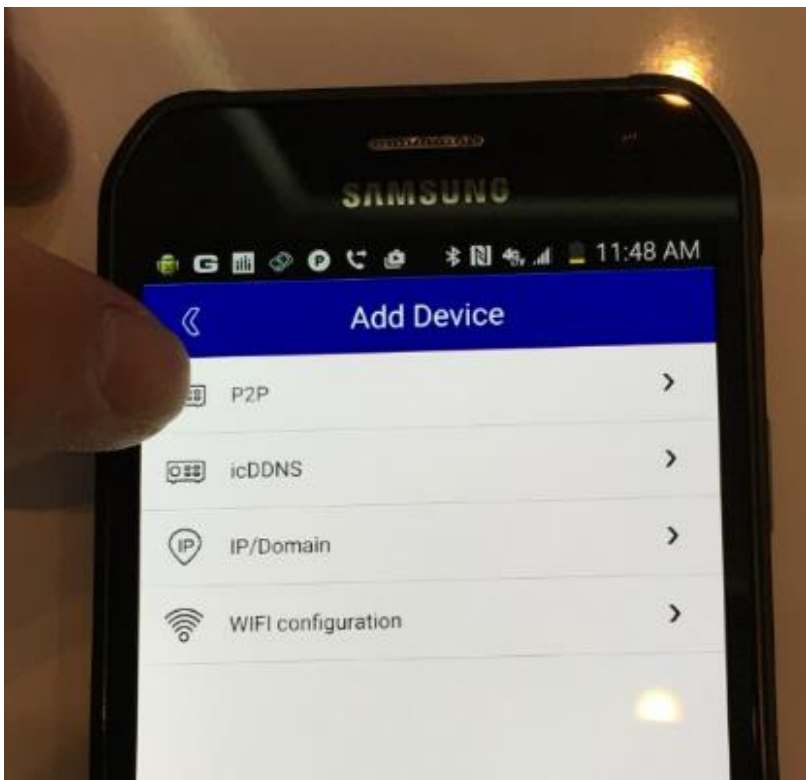
Touch the menu on the top left corner



Click device manager

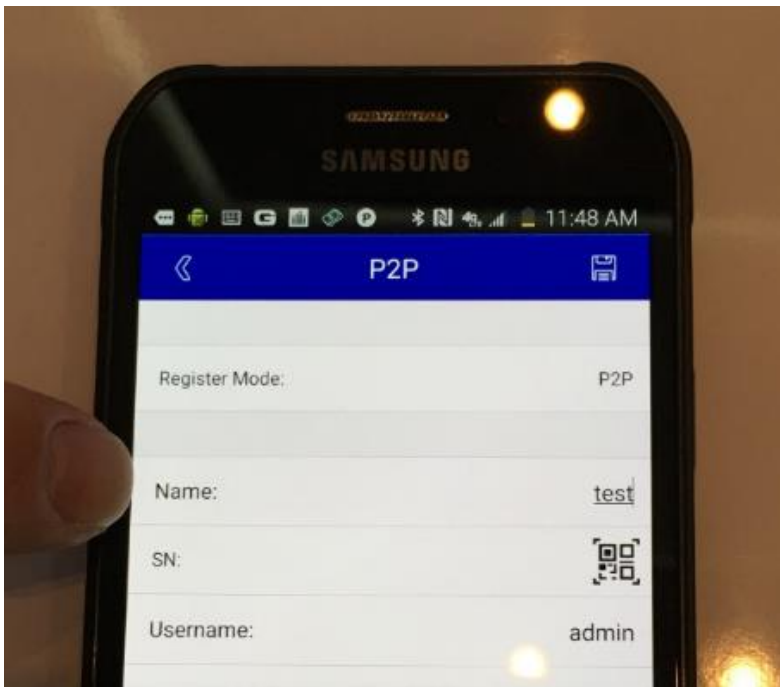


Touch the top left corner to add a device.

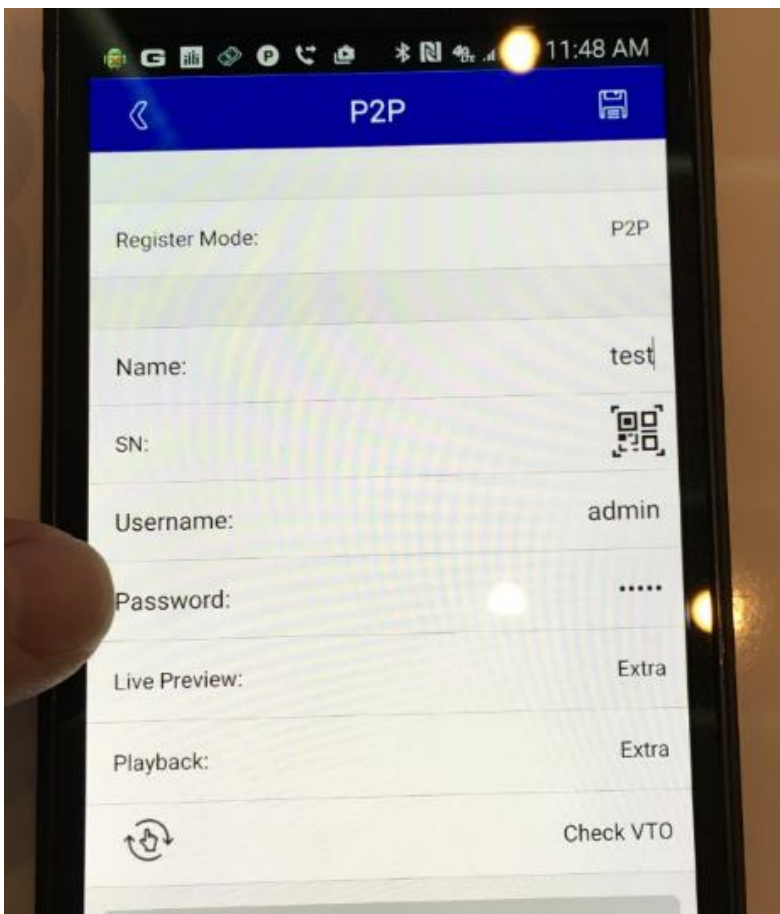


Touch P2P

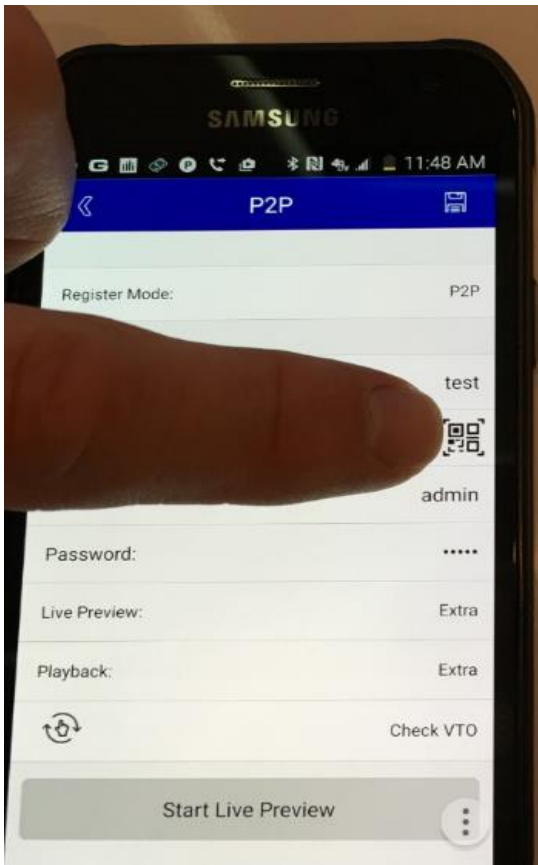




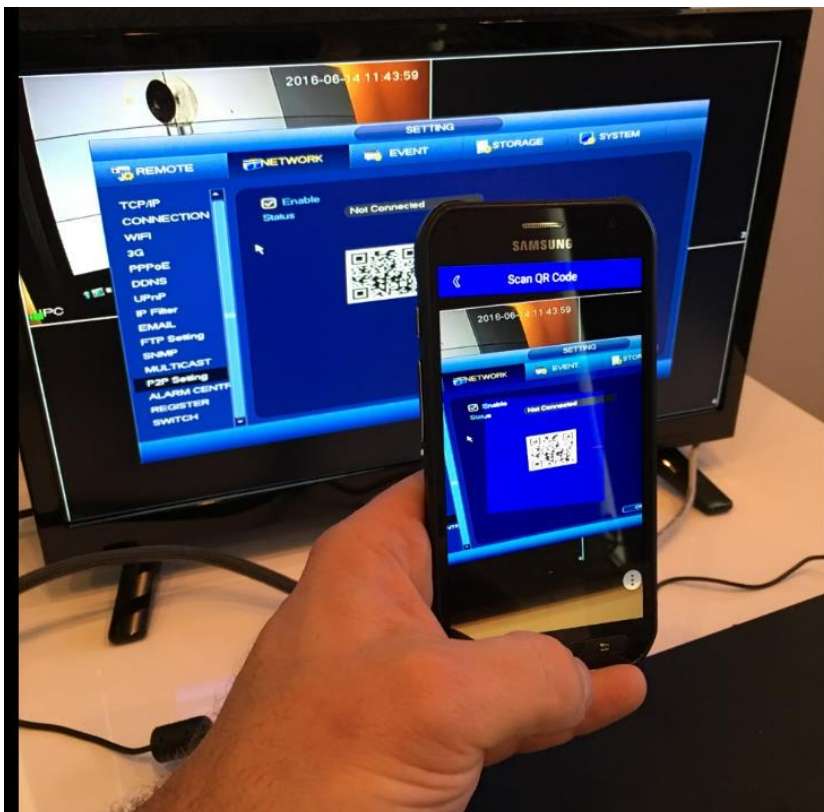
Name the device anything you want.



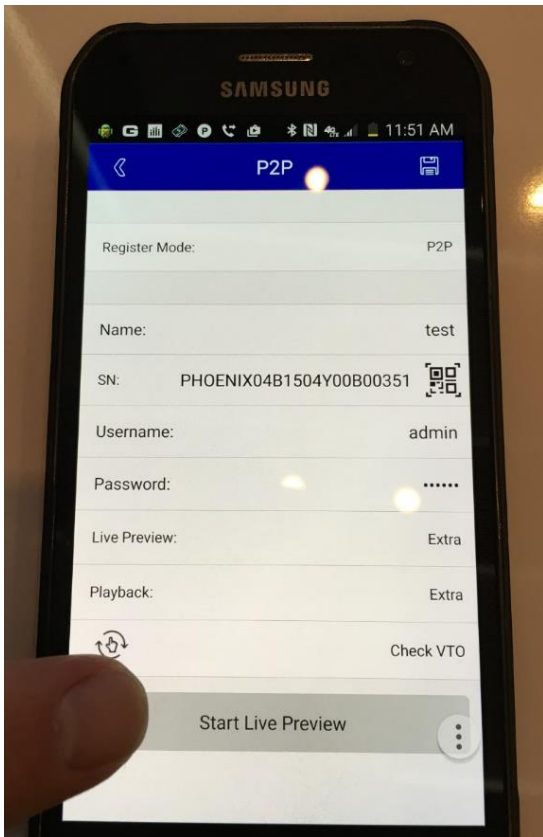
Now enter the new password you made earlier.



Next to SN: touch the Icon for QR code.



Now you can scan the QR code you see on your display monitor with your phone.



Click “start live preview to see your system live.